

GENERAL NOTES

- THESE DRAWINGS DEPICT GENERAL LOCATIONS OF LIFE SAFETY EQUIPMENT & FIELD DEVICES. EXACT ROUTING OF CONDUITS TO BE DETERMINED IN THE FIELD BY THE INSTALLING CONTRACTOR TO SUIT CONDITIONS.
- ALL FIRE ALARM SYSTEM WIRING SHALL BE CLEAR FROM SHORTS, OPENS AND GROUNDS.
- SHOULD ANY CONDITIONS EXIST THAT DIFFER FROM WHAT IS INDICATED ON THESE DRAWINGS WHICH CAUSE MAJOR DEVIATIONS IN THE WORK SHOWN, THE CONTRACTOR SHALL CONTACT THE DESIGNER IN A TIMELY MANNER SO AS NOT TO IMPAIR THE CONSTRUCTION SCHEDULE.
- CONTRACTOR IS RESPONSIBLE FOR MAKING AND OBTAINING APPROVAL FOR ALL NECESSARY ADJUSTMENTS IN CIRCUITING AS REQUIRED TO ACCOMMODATE THE RELOCATION OF EQUIPMENT AND/OR DEVICES WHICH ARE AFFECTED BY ANY AUTHORIZED CHANGE.
- THE POWER CIRCUIT TO THE FACP AND TO THE FIRE ALARM POWER SUPPLIES SHALL BE ON A DEDICATED 120V, 20A BRANCH CIRCUIT BREAKER, AND SHALL HAVE A RED MARKING, LOCK-ON PROVISION AND SHALL BE IDENTIFIED AS "FIRE ALARM CIRCUIT CONTROL." THE LOCATION OF THE CIRCUIT DISCONNECT MEANS (CIRCUIT BREAKER) SHALL BE PERMANENTLY IDENTIFIED AT THE FIRE ALARM CONTROL UNIT.
- ANY SMOKE DETECTOR HEAD INSTALLED BEFORE THE BUILDING IS CLEANED AND ACCEPTED SHALL BE COVERED TO PROTECT FROM DUST.
- INSTALLATION OF DEVICES SHALL BE IN ACCORDANCE WITH MANUFACTURER'S INSTRUCTIONS. POWER LIMITED AND NON-POWER LIMITED FIELD WIRING MUST BE INSTALLED WITHIN THE FACP ENCLOSURE IN ACCORDANCE WITH MANUFACTURER'S INSTRUCTIONS.
- ALL WIRING SHALL BE INSTALLED ACCORDING TO NFPA 70 (NEC).
- FIRE ALARM CIRCUITS EXTENDING BEYOND ONE BUILDING AND RUN OUTDOORS SHALL BE INSTALLED IN ACCORDANCE WITH NFPA 70 ARTICLES 760, 770, 775 AND 800 WHERE APPLICABLE.
- ALL WIRING, INCLUDING SHIELDS MUST BE DRY AND FREE OF SHORTS AND GROUNDS.
- ALL SHIELDED WIRE MUST HAVE SHIELD CONTINUITY AT FULL LENGTH OF THE WIRE.
- ONLY FIRE ALARM SYSTEM WIRING CAN BE RUN IN THE SAME CONDUIT.
- MAINTAIN 40 PERCENT MAXIMUM CONDUIT FILL RATIO AS PER NEC REQUIREMENTS.
- EXISTING CONDUITS MAY BE USED BY THE INSTALLATION CONTRACTOR AS DEEMED NECESSARY. HOWEVER, ANY EXISTING CONDUIT WILL BE USED ONLY IF CONDUITS MEET CURRENT STANDARDS AND CODES.
- THE FIRE ALARM SYSTEM SHALL BE MONITORED BY A CENTRAL UL LISTED MONITORING STATION THE MEANS OF MONITORING SHALL BE BY AES 7707P-879-ULP-M INTELLINET 2.0 FIRE SUBSCRIBER (RADIO).
- ALL CEILING ARE ASSUMED TO BE 10' A.F.F., SMOOTH CONSTRUCTION UNLESS NOTED OTHERWISE.

SHEET INDEX

SHEET #	SHEET DESCRIPTION
FA-01-001	COVER SHEET
FA-01-002A	MAIN BLDG A DESIGN PLAN
FA-01-002B	MAIN BLDG B DESIGN PLAN
FA-04-001	VMB & GUARDBOUSES DESIGN PLAN
FA-01-003	CALCULATIONS
FA-01-004	RISER DIAGRAM
FA-01-005	WIRING DIAGRAMS
FA-01-006	WIRING DIAGRAMS

BUILDING DATA

CONSTRUCTION TYPE:	III-B	FIRE PROTECTION:	FULLY SPRINKLERED
NUMBER OF STORES:	1		

SCOPE OF WORK

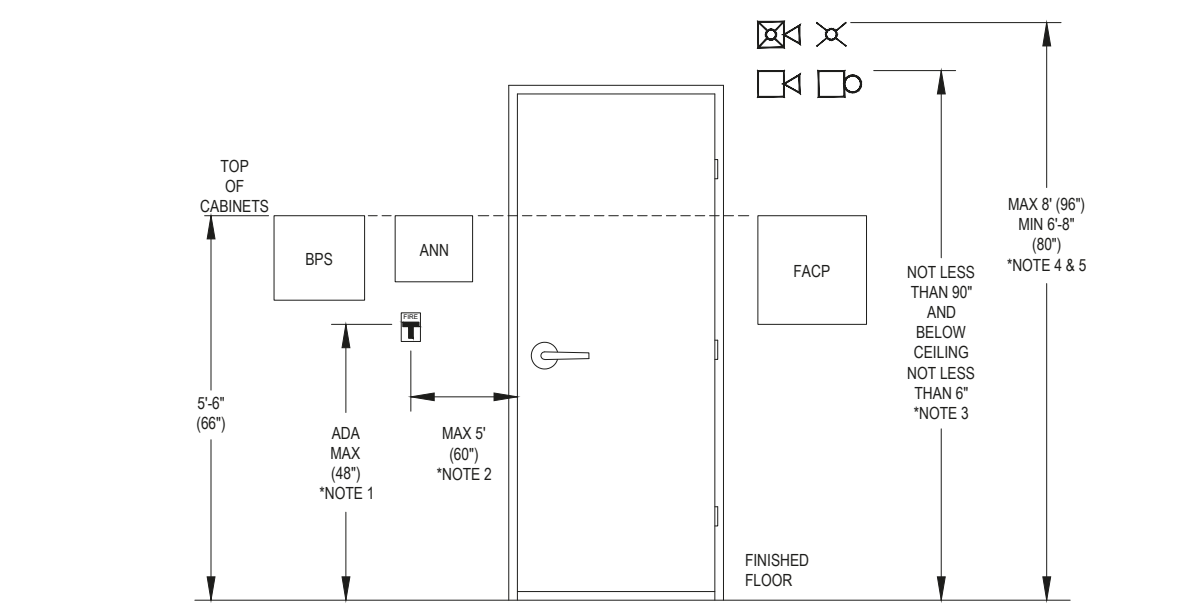
- INSTALLATION OF NEW FIRE ALARM DEVICES AS SHOWN ON PLANS.
- THE FIRE ALARM SYSTEM SHALL BE COMPLIANT TO CURRENT CODES.

APPLICABLE CODES

- INTERNATIONAL BUILDING CODE - 2018 ED.
- INTERNATIONAL MECHANICAL CODE - 2018 ED.
- UNIFORM PLUMBING CODE - 2018 ED.
- INTERNATIONAL FUEL GAS CODE - 2015 ED.
- INTERNATIONAL ENERGY CONSERVATION CODE - 2018 ED.
- NATIONAL ELECTRICAL CODE - 2017 ED.
- INTERNATIONAL FIRE CODE - 2018 ED.
- TEXAS ACCESSIBILITY STANDARDS - 2012 ED.
- NFPA 72 2016 EDITION

TYPICAL MOUNTING HEIGHTS

- NFPA 72 2016 17.4.4.5 THE OPERABLE PART OF EACH MANUAL FIRE ALARM BOX SHALL BE NOT LESS THAN 42" AND NOT MORE THAN 48" ABOVE FLOOR LEVEL.
- NFPA 72 2016 17.4.4.4 MANUAL FIRE ALARM BOXES SHALL BE LOCATED WITHIN 60" OF THE EXIT DOORWAY OPENING AT EACH EXIT ON EACH FLOOR.
- NFPA 72 2016 18.4.8.1 IF CEILING HEIGHTS ALLOW, AND UNLESS OTHERWISE PERMITTED BY 18.4.8.2 THROUGH 18.4.8.5, WALL-MOUNTED APPLIANCES SHALL HAVE THEIR TOPS ABOVE THE FINISHED FLOORS AT HEIGHTS OF NOT LESS THAN 90" AND BELOW THE FINISHED CEILING AT DISTANCES OF NOT LESS THAN 6".
- NFPA 72 2016 18.4.8.3 IF COMBINATION AUDIBLE/ VISIBLE APPLIANCES ARE INSTALLED, THE LOCATION OF THE INSTALLED APPLIANCE SHALL BE DETERMINED BY THE REQUIREMENTS OF 18.5.4. (SEE NOTE 9).
- NFPA 72 2016 18.5.5.1 WALL-MOUNTED APPLIANCES SHALL BE MOUNTED SUCH THAT THE ENTIRE LENS IS NOT LESS THAN 80" AND NOT GREATER THAN 96" ABOVE THE FINISHED FLOOR OR AT THE MOUNTING HEIGHT SPECIFIED USING THE PERFORMANCE BASED ALTERNATIVE OF 18.5.5.6.



SITE PLAN



EQUIPMENT LIST

SYMBOL	QTY	MANUFACTURER	PART NO	DESCRIPTION
FACU	1	EDWARDS	EST4 VOICE PANEL	FACP VOICE PANEL
	1	EDWARDS	3-ATPINT	AUDIO TERMINAL PANEL INTERFACE
	1	EDWARDS	3-SSDC1	SIGNATURE SINGLE DRIVER CONTROLLER (LRM)
	1	EDWARDS	ATP	AUDIO TERMINAL PANEL
	4	EDWARDS	3-2A40B	40 WATT ZONED AMPLIFIER, CLASS B, 25 OR 70VRMS
	1	EDWARDS	3-2A20B	20 WATT ZONED AMPLIFIER, CLASS B, 25 OR 70VRMS
	1	EDWARDS	SA-DACT	DUAL LINE DIALER
	1	EDWARDS	4-LCDANN	COLOR LCD DISPLAY
	1	EDWARDS	3-PPS/M	PRIMARY POWER SUPPLY 120V
	1	EDWARDS	3-MODCOM	MODEM COMMUNICATOR AND DIALER
	1	EDWARDS	4-LCDLE	DISPLAY MAIN LCD MODULE
	1	EDWARDS	4-MIC	PAGING MICROPHONE
	1	EDWARDS	4X-12SR	12 SWITCH, 12 RED LED DISPLAY/CONTROL MODULE
	1	EDWARDS	RKU-SERIES	AMPLIFIER CABINET
	AAMP	1	EDWARDS	ATP
1		EDWARDS	3-ATPINT	AUDIO TERMINAL PANEL INTERFACE
NAC	2	EDWARDS	1B3-250	250 WATT AMPLIFIER, 120VAC
	3	EDWARDS	BPS10A	POWER SUPPLY, 10A, 120VAC, RED
F AS	3	STI	SS2xy0	STOPPER STATION, YELLOW, SHIELDED
F	1	EDWARDS	SIGA-278	DOUBLE ACTION FIRE ALARM STATION
SM	2	EDWARDS	SIGA-CC1S	SYNCHRONIZATION MODULE
AM	9	EDWARDS	SIGA-CT1	SINGLE INPUT MODULE
ADM	4	EDWARDS	SIGA-CT2	DUAL INPUT MODULE
CM	10	EDWARDS	SIGA-CR	CONTROL RELAY MODULE
CC	1	EDWARDS	SIGA-CC2	SIGNAL MODULE
S	10	EDWARDS	SIGA-SD	DUCT DETECTOR
	10	EDWARDS	SD-T60	SUPERDUCT, AIR SAMPLE TUBE, 60 INCH
S	8	EDWARDS	SIGA-OSD W/SIGA-SB4 BASE	SMOKE DETECTOR
WP	3	EDWARDS	WG4WF-SVMHC	OUTDOOR SPEAKER/STROBE, WALL, WHITE
S	93	EDWARDS	GCSVWA	SPEAKER/STROBE, CEILING, WHITE
S	10	EDWARDS	90215A-801-06-L	TCPA-10 HYPERSPIKE SPEAKER, WHITE
S	15	EDWARDS	GCVWN	STROBE, CEILING, WHITE
	15	EDWARDS	GOVWA-CVR	STROBE COVER, WHITE, ALERT
SS	5	DITEK	DTK-120HW	SURGE PROTECTOR

CABLE AND WIRE LEGEND

LABEL	PART NO	AWG	RESISTANCE (Ω/KFT)	DESCRIPTION	TOTAL LENGTH
D'	18/2 FPLP (SLC)	18	7.77	2 COND. DIR. BURIAL SOLID COPPER FPLP UNSHIELDED	800'
D	18/2 FPLP (SLC)	18	7.77	2 COND. SOLID COPPER FPLP UNSHIELDED	4566'
P	14/2 FPLP (AUX)	14	3.07	2 COND. SOLID COPPER FPLP UNSHIELDED	20'
S	16/2 FPLP (SPEAKER)	16	4.89	2 COND. SOLID COPPER FPLP SPEAKER	10381'
V	14/2 FPLP (NAC)	14	3.07	2 COND. SOLID COPPER FPLP UNSHIELDED	6254'
Z	18/2 FPLP (IDC)	18	7.77	2 COND. SOLID COPPER FPLP UNSHIELDED	4'

EVENT

EVENT	TROUBLE SIGNAL @ FIRE ALARM CONTROL PANEL	SUPERVISORY SIGNAL @ FIRE ALARM CONTROL PANEL	ALARM SIGNAL @ FIRE ALARM CONTROL PANEL	ACTIVATE NOTIFICATION DEVICES	GENERAL FIRE SHUTDOWN	LOCAL T/PAK SHUTDOWN	ACTIVATE SHOOTER MESSAGE	WEATHER ALERT MESSAGE
SMOKE/HEAT/CO DETECTOR			●	●	●			
MANUAL PULL STATION			●	●	●			
WATERFLOW SWITCH			●	●	●			
LOCAL DUCT DETECTOR		●				●		
TAMPER SWITCH		●						
CONTROL VALVES		●						
TEST HEADER VALVES		●						
BYPASS VALVES		●						
FIRE PUMP RUNNING		●						
FIRE PUMP PHASE REVERSAL		●						
FIRE PUMP AC FAILURE		●						
FACP AC POWER FAILURE	●							
SYSTEM LOW BATTERY	●							
OPEN CIRCUIT	●							
GROUND FAULT	●							
NOTIFICATION APPLIANCE CIRCUIT SHORT	●							
CELLULAR DISCONNECT	●							
ETHERNET DISCONNECT	●							
ACTIVE SHOOTER PULL STATION							●	
CLIMATE WEATHER BUTTON								●

NOTE: ALL SIGNALS WILL BE SENT TO A CENTRAL STATION

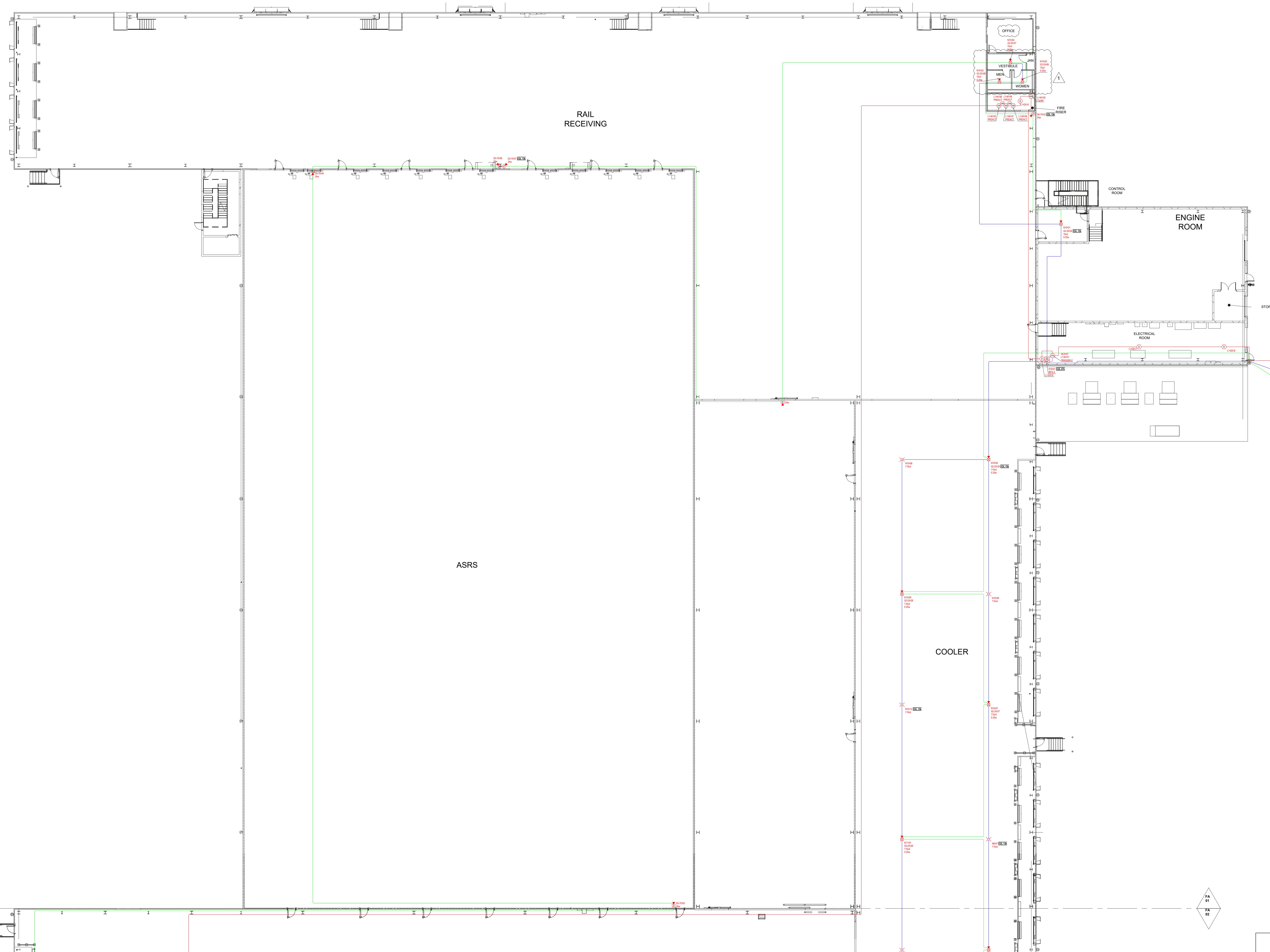
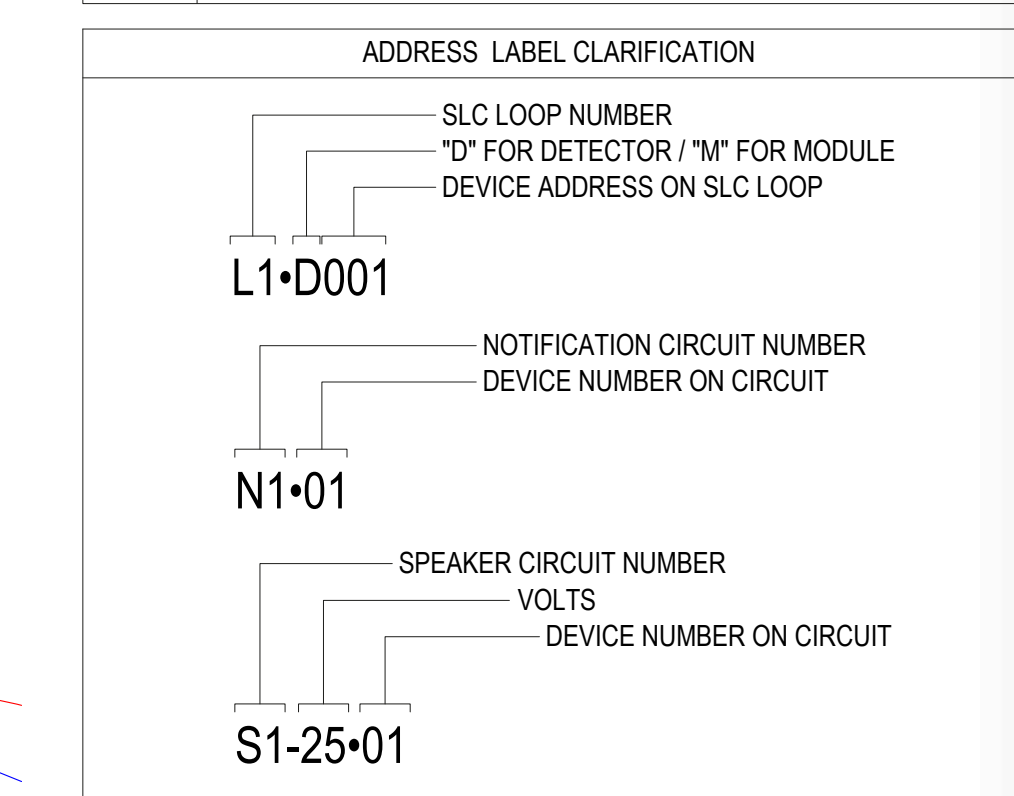
ACTION
TROUBLE SIGNAL @ FIRE ALARM CONTROL PANEL
SUPERVISORY SIGNAL @ FIRE ALARM CONTROL PANEL
ALARM SIGNAL @ FIRE ALARM CONTROL PANEL
ACTIVATE NOTIFICATION DEVICES
GENERAL FIRE SHUTDOWN
LOCAL T/PAK SHUTDOWN
ACTIVATE SHOOTER MESSAGE
WEATHER ALERT MESSAGE

NOT FOR CONSTRUCTION

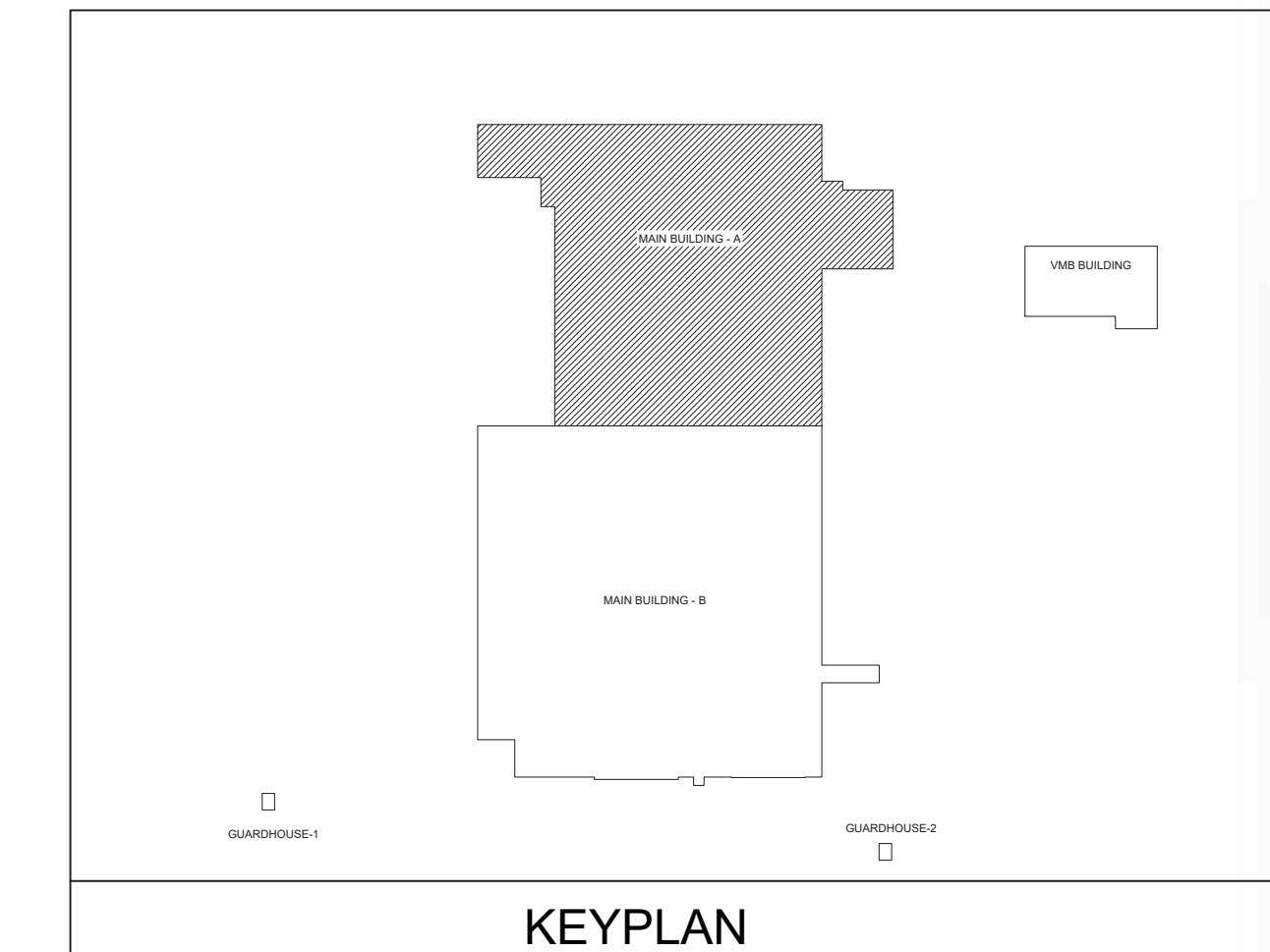
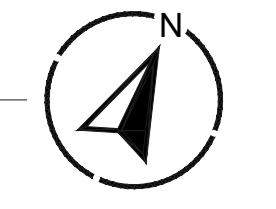
EQUIPMENT LIST	
SYMBOL	DESCRIPTION
(FAC)	FACP VOICE PANEL
(AMP)	AMPLIFIER
(NAC)	POWER SUPPLY, 6.5A, 120VAC, RED
(F)	DOUBLE ACTION FIRE ALARM STATION
(F) AS	STOPPER STATION, YELLOW, SHIELDED
(SM)	SYNCHRONIZATION MODULE
(SM)	SINGLE INPUT MODULE
(DM)	DUAL INPUT MODULE
(CR)	CONTROL RELAY MODULE
(SM)	SIGNAL MODULE
(D)	DUCT DETECTOR
(S)	SMOKE DETECTOR
(WSP)	OUTDOOR SPEAKER/STROBE, WHITE, WALL
(WSP)	SPEAKER/STROBE, CEILING, WHITE
(WSP)	TOPA-10 AUDIO SPEAKER, WHITE
(S)	STROBE, CEILING, WHITE
(SS)	SURGE PROTECTOR

CABLE AND WIRE LEGEND		
LABEL	PART NO	DESCRIPTION
D'	182 FFLP (SLC)	2 COND. DIR. BURIAL SOLID COPPER FFLP UNSHIELDED
D	182 FFLP (SLC)	2 COND. SOLID COPPER FFLP UNSHIELDED
P	142 FFLP (AUX)	2 COND. SOLID COPPER FFLP UNSHIELDED
S	162 FFLP (SPEAKER)	2 COND. SOLID COPPER FFLP SPEAKER
V	142 FFLP (NAC)	2 COND. SOLID COPPER FFLP UNSHIELDED
Z	182 FFLP (DC)	2 COND. SOLID COPPER FFLP UNSHIELDED

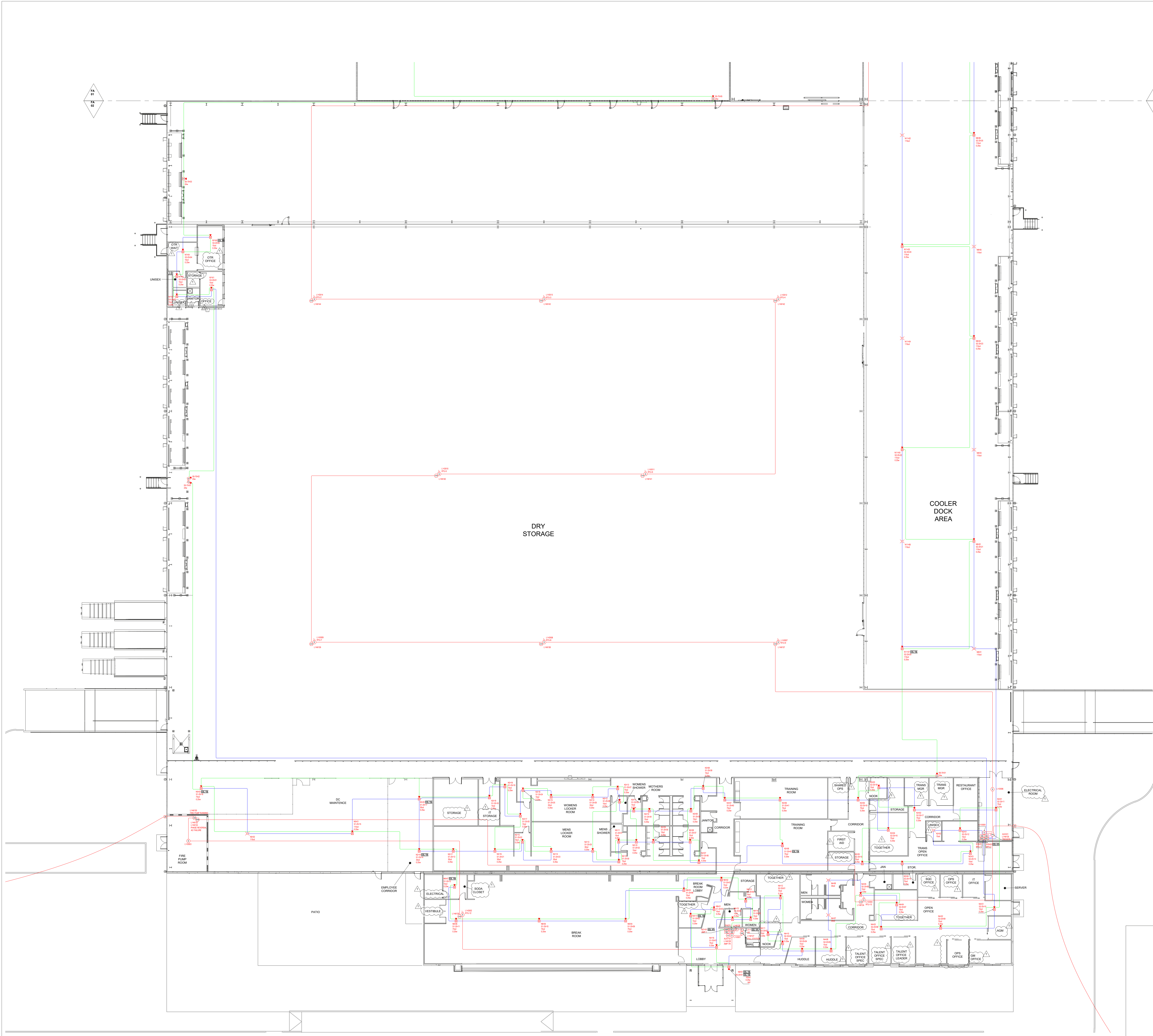
ABBREVIATIONS	
WF	WATERFLOW SWITCH
TS	TAMPER SWITCH



1 MAIN BLDG A FLOOR PLAN



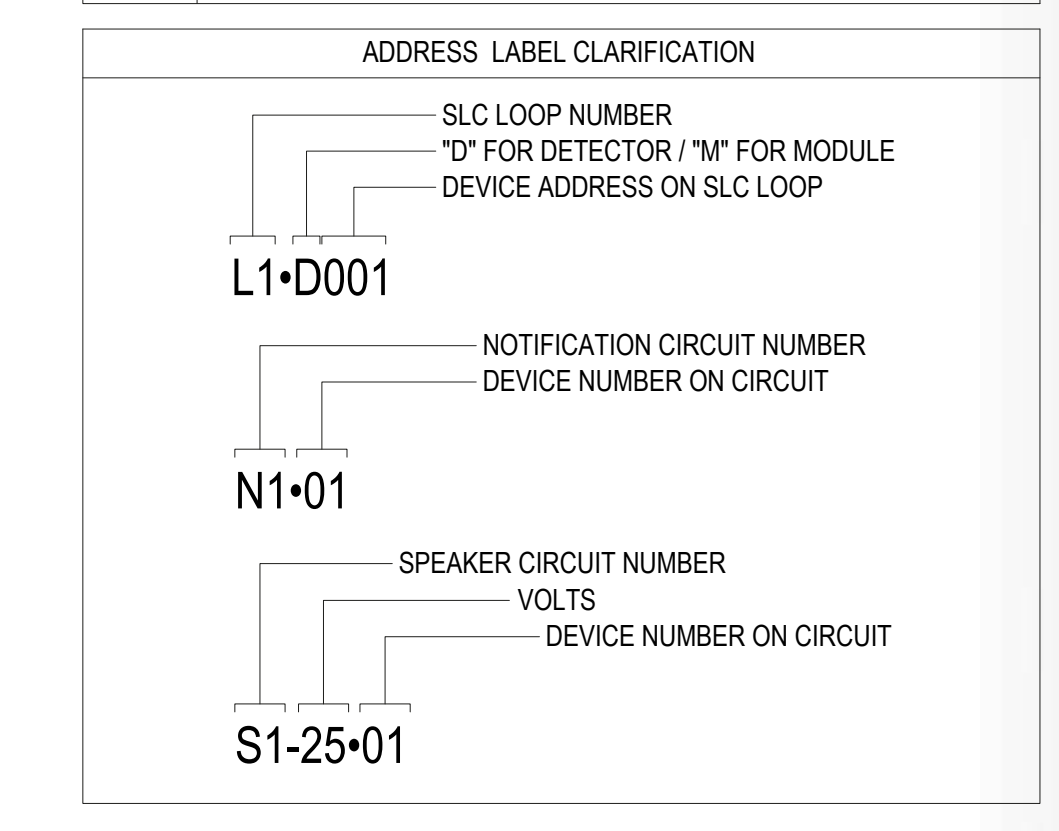
NOT FOR CONSTRUCTION



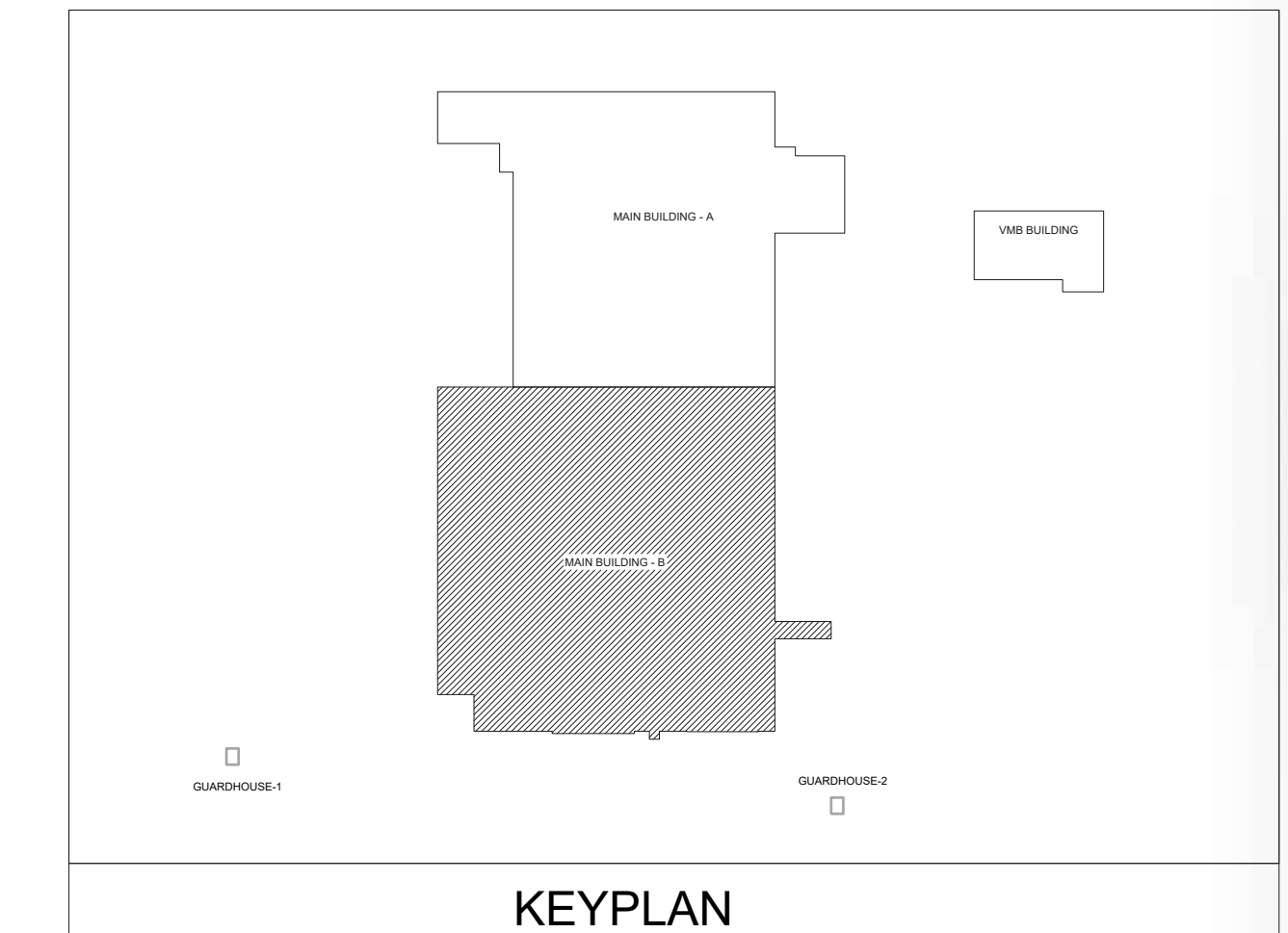
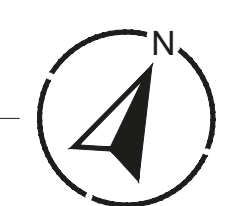
EQUIPMENT LIST	
SYMBOL	DESCRIPTION
(FACP)	FACP VOICE PANEL
(AMP)	AMPLIFIER
(NAC)	POWER SUPPLY, 6.5A, 120VAC, RED
(F)	DOUBLE ACTION FIRE ALARM STATION
(F) AS	STOPPER STATION, YELLOW, SHIELDED
(SM)	SYNCHRONIZATION MODULE
(SIM)	SINGLE INPUT MODULE
(DIM)	DUAL INPUT MODULE
(CRM)	CONTROL RELAY MODULE
(SM)	SIGNAL MODULE
(D)	DUCT DETECTOR
(S)	SMOKE DETECTOR
(WSP)	OUTDOOR SPEAKER-STROBE, WHITE, WALL
(WSP)	SPEAKER-STROBE, CEILING, WHITE
(WSP)	TOPA-10 AUDIO SPEAKER, WHITE
(S)	STROBE, CEILING, WHITE
(SS)	SURGE PROTECTOR

CABLE AND WIRE LEGEND		
LABEL	PART NO	DESCRIPTION
D'	182 FFLP (SLC)	2 COND. DIR. BURIAL SOLID COPPER FFLP UNSHIELDED
D	182 FFLP (SLC)	2 COND. SOLID COPPER FFLP UNSHIELDED
P	142 FFLP (AUX)	2 COND. SOLID COPPER FFLP UNSHIELDED
S	162 FFLP (SPEAKER)	2 COND. SOLID COPPER FFLP SPEAKER
V	142 FFLP (NAC)	2 COND. SOLID COPPER FFLP UNSHIELDED
Z	182 FFLP (DC)	2 COND. SOLID COPPER FFLP UNSHIELDED

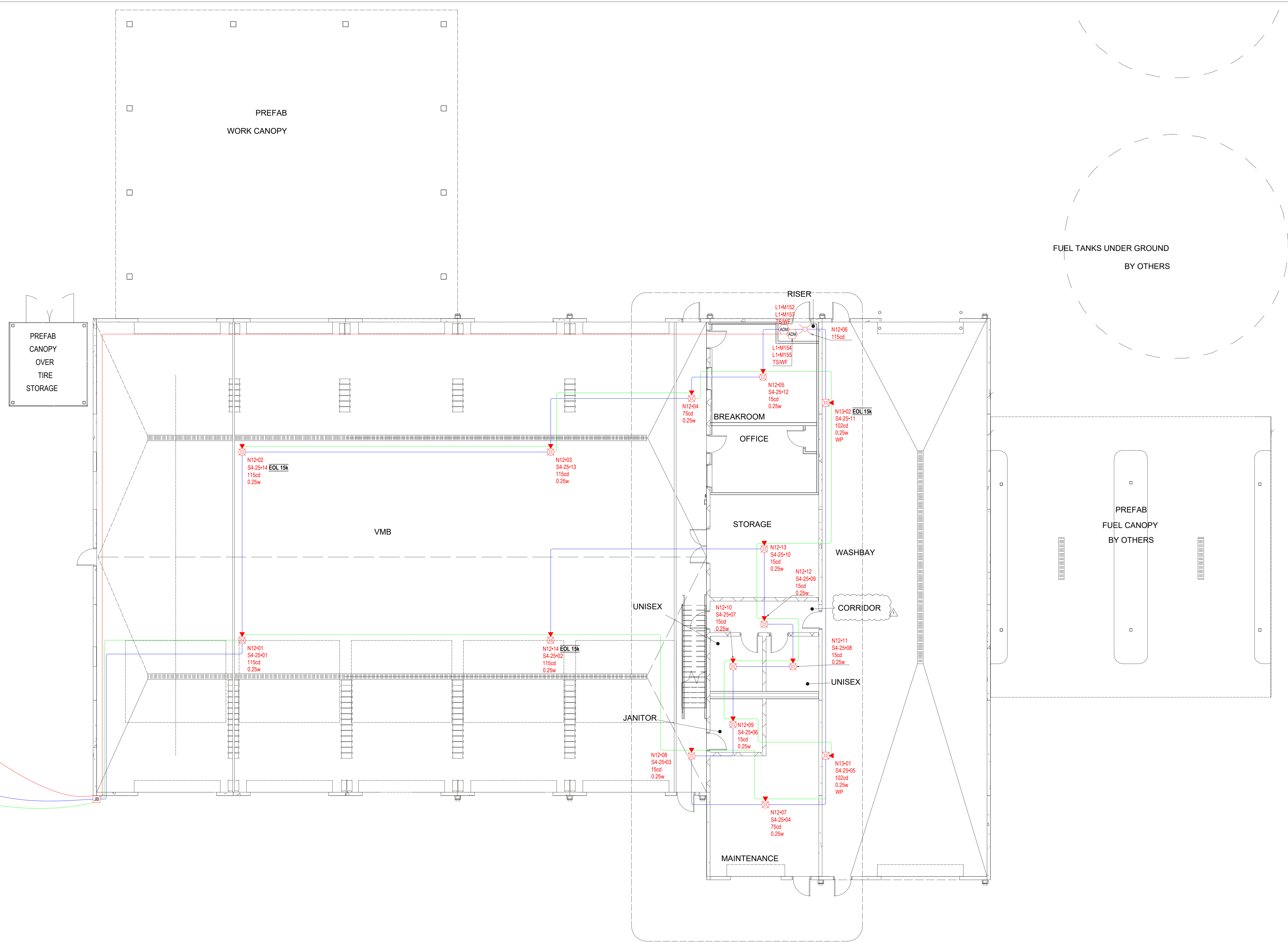
ABBREVIATIONS	
WF	WATERFLOW SWITCH
TS	TAMPER SWITCH



1 MAIN BLDG B FLOOR PLAN
0 2' 10' 20' 30'



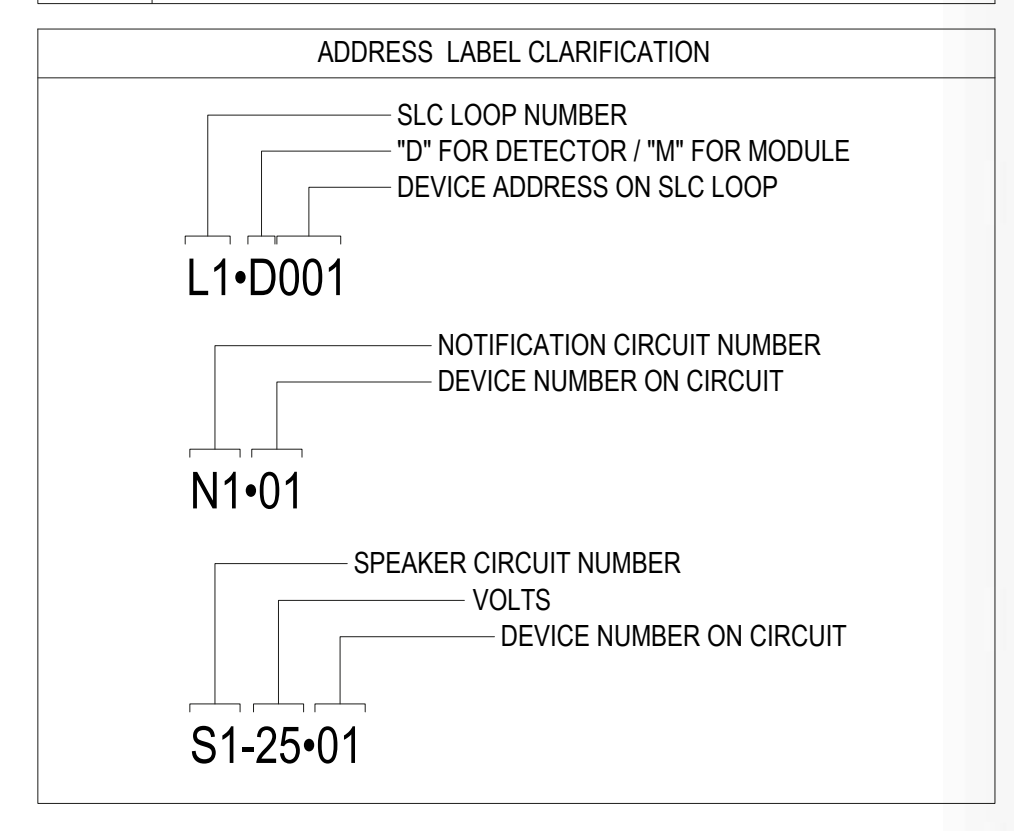
NOT FOR CONSTRUCTION



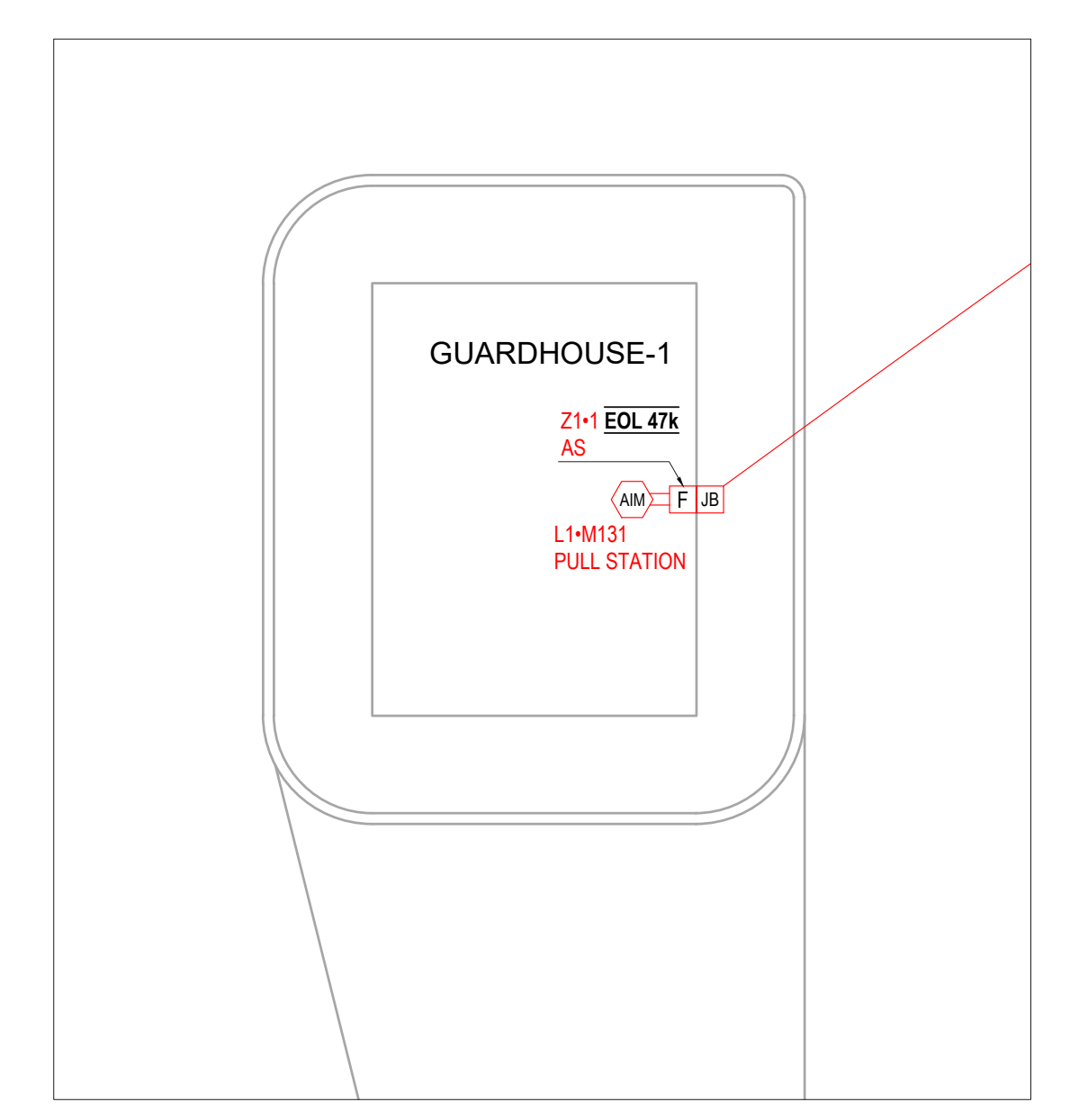
EQUIPMENT LIST	
SYMBOL	DESCRIPTION
(FAC)	FAC/VOICE PANEL
(AMP)	AMPLIFIER
(PAC)	POWER SUPPLY, 6.5A, 120VAC, RED
(F)	DOUBLE ACTION FIRE ALARM STATION
(F) AS	STOPPER STATION, YELLOW, SHIELDED
(SM)	SYNCHRONIZATION MODULE
(SM)	SINGLE INPUT MODULE
(DM)	DUAL INPUT MODULE
(CR)	CONTROL RELAY MODULE
(SM)	SIGNAL MODULE
(D)	DUCT DETECTOR
(S)	SMOKE DETECTOR
(S) WP	OUTDOOR SPEAKER/STROBE, WHITE, WALL
(S)	SPEAKER/STROBE, CEILING, WHITE
(S)	TOPA-10 AUDIO SPEAKER, WHITE
(S)	STROBE, CEILING, WHITE
(SS)	SURGE PROTECTOR

CABLE AND WIRE LEGEND		
LABEL	PART NO	DESCRIPTION
D'	182 FFLP (SLC)	2 COND. DIR. BURIAL SOLID COPPER FFLP UNSHIELDED
D	182 FFLP (SLC)	2 COND. SOLID COPPER FFLP UNSHIELDED
P	142 FFLP (AUX)	2 COND. SOLID COPPER FFLP UNSHIELDED
S	162 FFLP (SPEAKER)	2 COND. SOLID COPPER FFLP SPEAKER
V	142 FFLP (NAC)	2 COND. SOLID COPPER FFLP UNSHIELDED
Z	182 FFLP (DC)	2 COND. SOLID COPPER FFLP UNSHIELDED

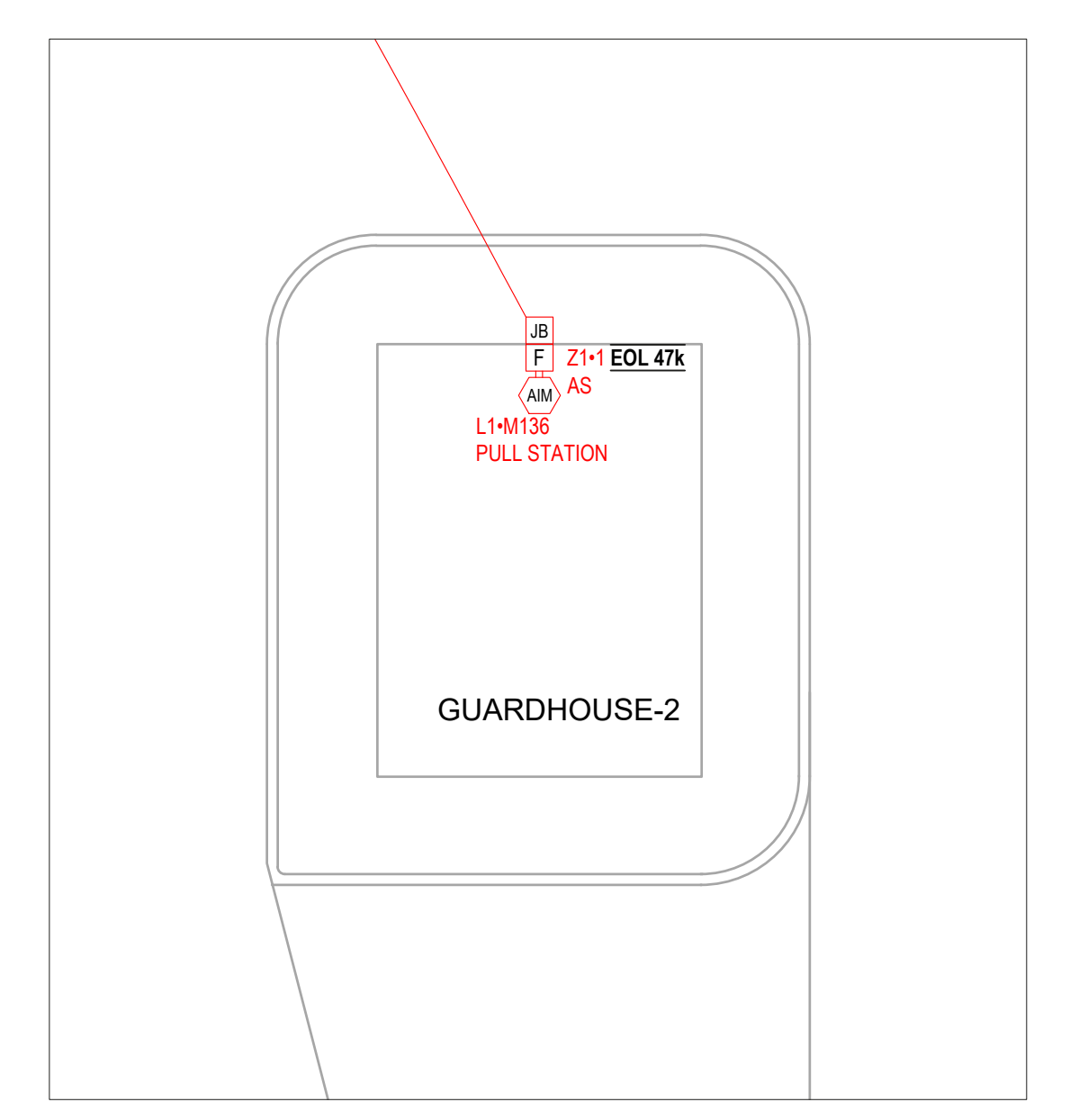
ABBREVIATIONS	
WF	WATERFLOW SWITCH
TS	TAMPER SWITCH



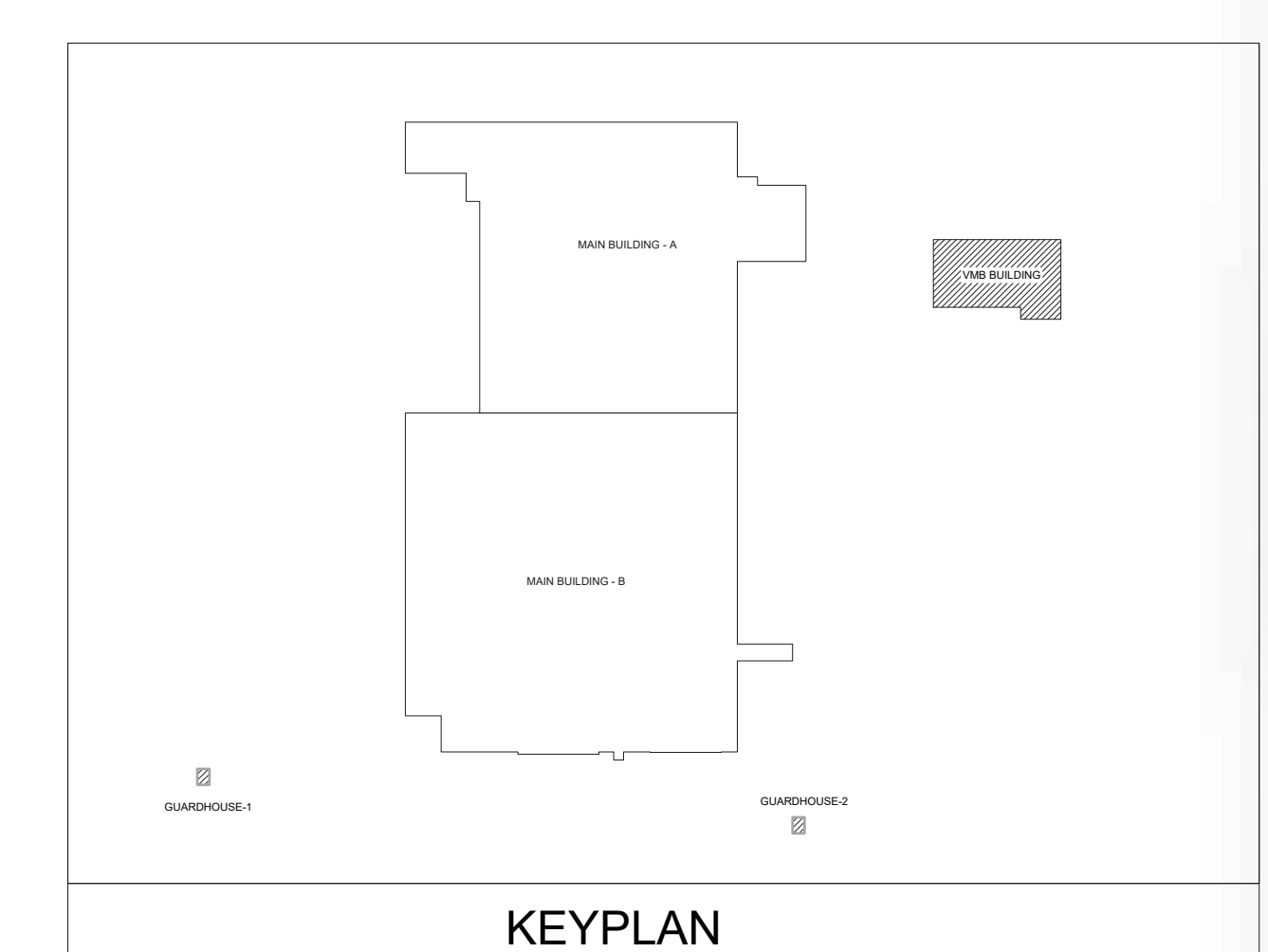
3 VMB FLOOR PLAN
1" = 12'



1 GUARDHOUSE-1 FLOOR PLAN
1" = 12'



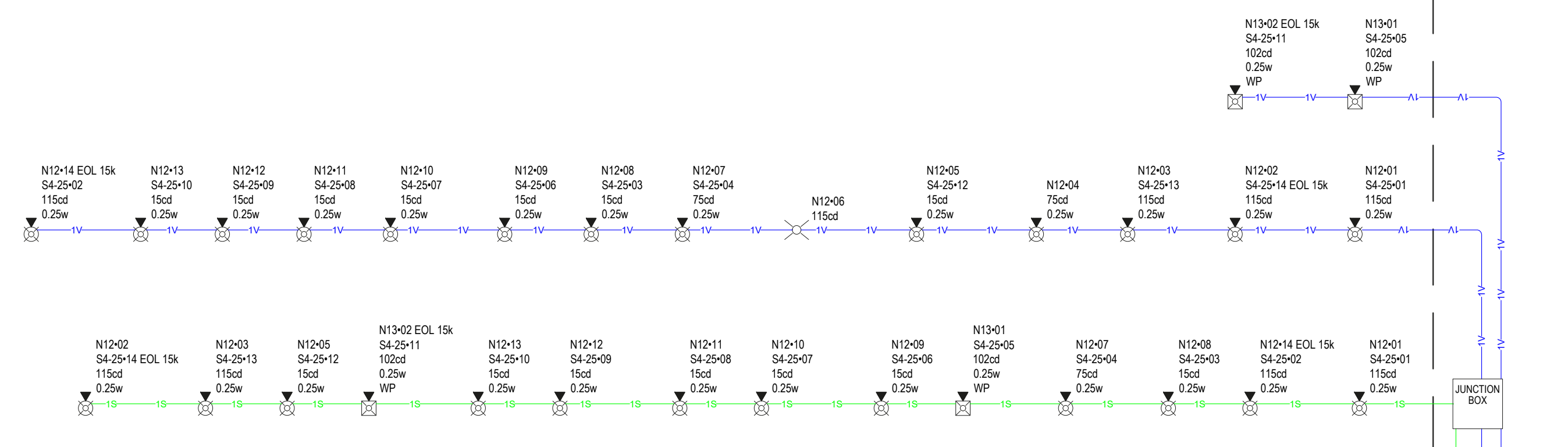
2 GUARDHOUSE-2 FLOOR PLAN
1" = 12'



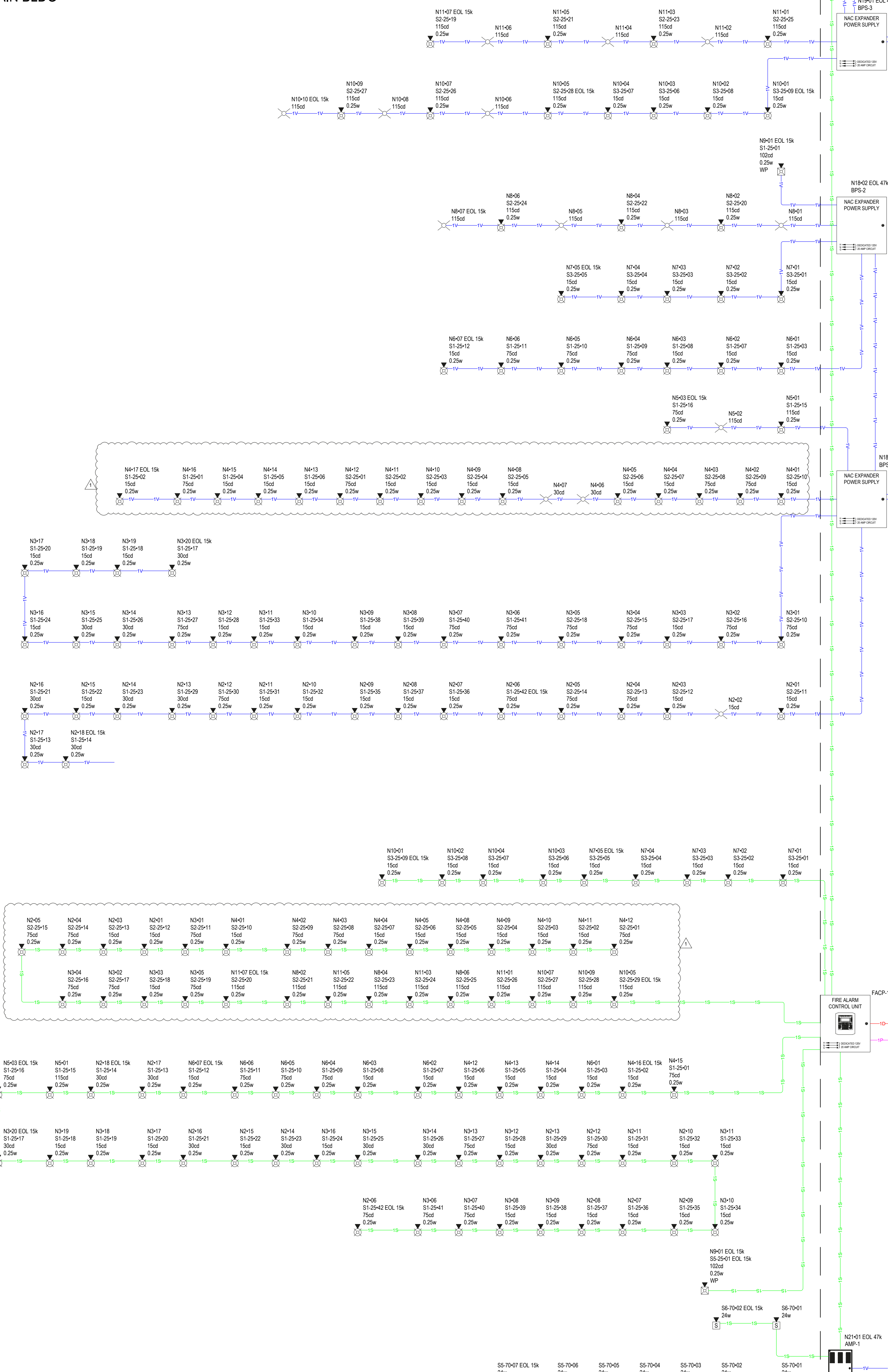
NOT FOR CONSTRUCTION

RISER DIAGRAM

VMB BLDG

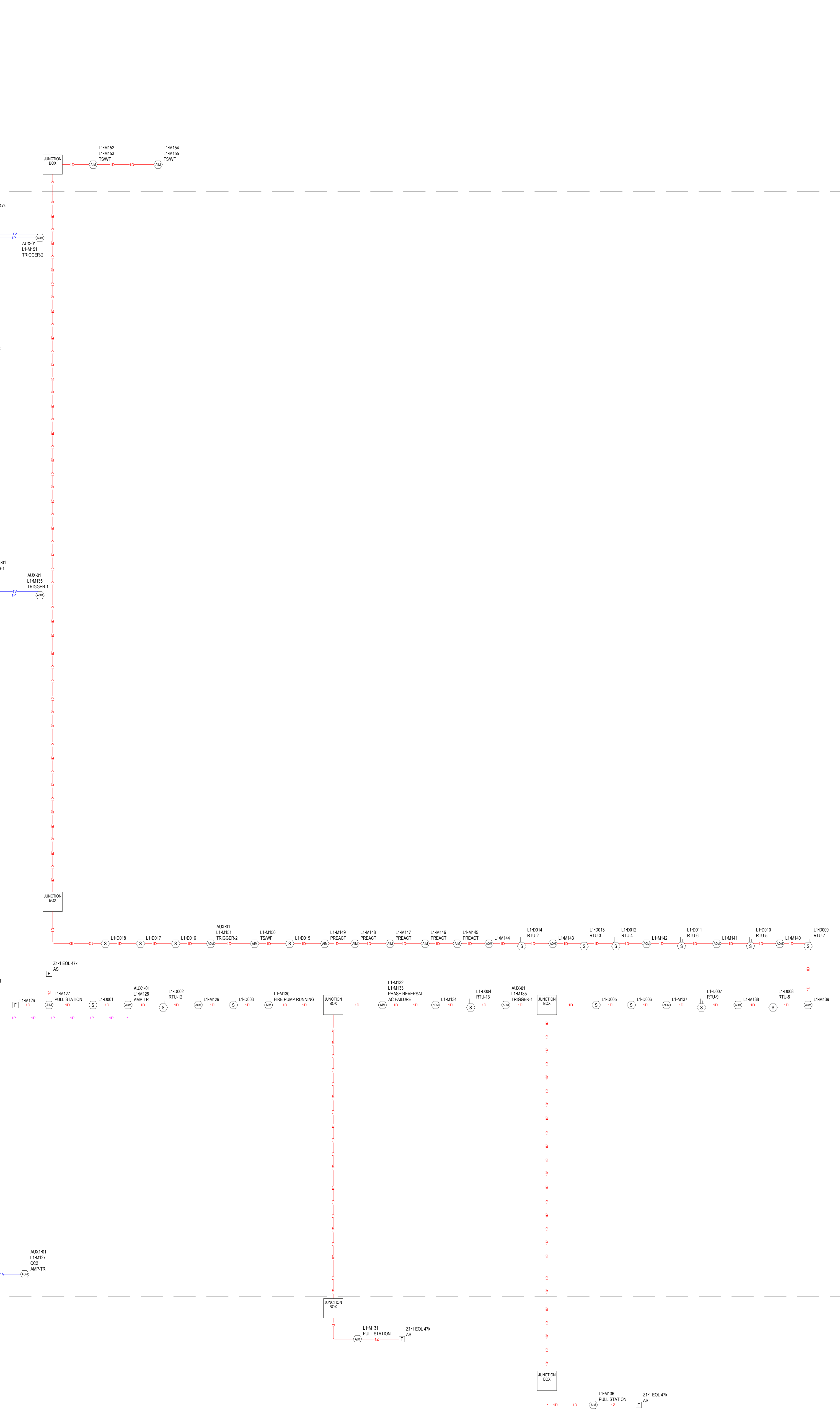


MAIN BLDG



HOUSEGUARD-1

HOUSEGUARD-2



NOT FOR CONSTRUCTION

GENERAL NOTES

- THESE DRAWINGS DEPICT GENERAL LOCATIONS OF LIFE SAFETY EQUIPMENT & FIELD DEVICES. EXACT ROUTING OF CONDUITS TO BE DETERMINED IN THE FIELD BY THE INSTALLING CONTRACTOR TO SUIT CONDITIONS.
- ALL FIRE ALARM SYSTEM WIRING SHALL BE CLEAR FROM SHORTS, OPENS AND GROUNDS.
- SHOULD ANY CONDITIONS EXIST THAT DIFFER FROM WHAT IS INDICATED ON THESE DRAWINGS WHICH CAUSE MAJOR DEVIATIONS IN THE WORK SHOWN, THE CONTRACTOR SHALL CONTACT THE DESIGNER IN A TIMELY MANNER SO AS NOT TO IMPAIR THE CONSTRUCTION SCHEDULE.
- CONTRACTOR IS RESPONSIBLE FOR MAKING AND OBTAINING APPROVAL FOR ALL NECESSARY ADJUSTMENTS IN CIRCUITING AS REQUIRED TO ACCOMMODATE THE RELOCATION OF EQUIPMENT AND/OR DEVICES WHICH ARE AFFECTED BY ANY AUTHORIZED CHANGE.
- THE POWER CIRCUIT TO THE FACP AND TO THE FIRE ALARM POWER SUPPLIES SHALL BE ON A DEDICATED 120V, 20A BRANCH CIRCUIT BREAKER, AND SHALL HAVE A RED MARKING, LOCK-ON PROVISION AND SHALL BE IDENTIFIED AS "FIRE ALARM CIRCUIT CONTROL". THE LOCATION OF THE CIRCUIT DISCONNECT MEANS (CIRCUIT BREAKER) SHALL BE PERMANENTLY IDENTIFIED AT THE FIRE ALARM CONTROL UNIT.
- ANY SMOKE DETECTOR HEAD INSTALLED BEFORE THE BUILDING IS CLEANED AND ACCEPTED SHALL BE COVERED TO PROTECT FROM DUST.
- INSTALLATION OF DEVICES SHALL BE IN ACCORDANCE WITH MANUFACTURER'S INSTRUCTIONS. POWER LIMITED AND NON POWER LIMITED FIELD WIRING MUST BE INSTALLED WITHIN THE FACP ENCLOSURE IN ACCORDANCE WITH MANUFACTURER'S INSTRUCTIONS.
- ALL WIRING SHALL BE INSTALLED ACCORDING TO NFPA 70 (NEC).
- FIRE ALARM CIRCUITS EXTENDING BEYOND ONE BUILDING AND RUN OUTDOORS SHALL BE INSTALLED IN ACCORDANCE WITH NFPA 70 ARTICLES 760, 770, 775 AND 800 WHERE APPLICABLE.
- ALL WIRING, INCLUDING SHIELDS MUST BE DRY AND FREE OF SHORTS AND GROUNDS.
- ALL SHIELDED WIRE MUST HAVE SHIELD CONTINUITY AT FULL LENGTH OF THE WIRE.
- ONLY FIRE ALARM SYSTEM WIRING CAN BE RUN IN THE SAME CONDUIT.
- MAINTAIN 40 PERCENT MAXIMUM CONDUIT FILL RATIO AS PER NEC REQUIREMENTS.
- EXISTING CONDUITS MAY BE USED BY THE INSTALLATION CONTRACTOR AS DEEMED NECESSARY, HOWEVER, ANY EXISTING CONDUIT WILL BE USED ONLY IF CONDUITS MEET CURRENT STANDARDS AND CODES.
- THE FIRE ALARM SYSTEM SHALL BE MONITORED BY A CENTRAL, UL LISTED MONITORING STATION. THE MEANS OF MONITORING SHALL BE VIA TWO COPPER ANALOG PHONE LINES, AND THE FIRE ALARM PANEL WILL SEIZE THE LINES FOR FIRE USE.
- ALL CEILINGS ARE ASSUMED TO BE 10' A.F.F., SMOOTH CONSTRUCTION UNLESS NOTED OTHERWISE.

EQUIPMENT LIST				
SYMBOL	QTY	MANUFACTURER	PART NO	DESCRIPTION
☐	1	FIRELITE	ES-200X	FIRE ALARM CONTROL PANEL
☐	1	FIRELITE	PMRM02X1	NAC POWER EXPANDER
☐	6	GAMEWELL FCI	HPF-PS10	FIRE ALARM POWER SUPPLY
☐	1	FIRELITE	ANN-80	REMOTE LCD ANNUNCIATOR
☐	35	FIRELITE	IG-12LX	ADDRESSABLE MANUAL PULL STATION WITH INTERFACE MODULE MOUNTED INSIDE
☐	14	FIRELITE	MMF-300	ADDRESSABLE SINGLE MONITOR MODULE
☐	8	FIRELITE	SDM6 WB3004	WHITE ADDRESSABLE PHOTOELECTRIC DETECTOR, STANDARD BASE
☐	222	SYSTEM SENSOR	PC2RL	HORN STROBE CEILING RED

CABLE AND WIRE LEGEND					
LABEL	PART NO	AWG	RESISTANCE (Ω/100 FT)	DESCRIPTION	TOTAL LENGTH
485	182 FPLP (RS-485)	18	7.77	2 COND. SOLID COPPER FPLP ANALOG UNSHEATHED	789'
A	182 FPLP (SLC)	18	7.77	2 COND. SOLID COPPER FPLP ADDRESSABLE UNSHEATHED	4769'
P	142 FPLP (ALU)	14	3.07	2 COND. SOLID COPPER FPLP ADDRESSABLE UNSHEATHED	789'
V	142 FPLP (NAC)	14	3.07	2 COND. SOLID COPPER FPLP ANALOG UNSHEATHED	1200'

SHEET INDEX

SHEET #	SHEET DESCRIPTION
FA-00	COVER SHEET
FA-01	RISER DIAGRAM
FA-02	FIRST FLOOR PLAN AREA A & B
FA-03	FIRST FLOOR PLAN AREA C & D
FA-04	SECOND FLOOR PLAN AREA A & C
FA-05	LUMP SUM REPORTS
FA-06	BATTERY CALCULATIONS
FA-07	WIRING DIAGRAM

SCOPE OF WORK

- INSTALLATION OF NEW FIRE ALARM DEVICES AS SHOWN ON PLANS.
- THE FIRE ALARM SYSTEM SHALL BE COMPLIANT TO CURRENT CODES.

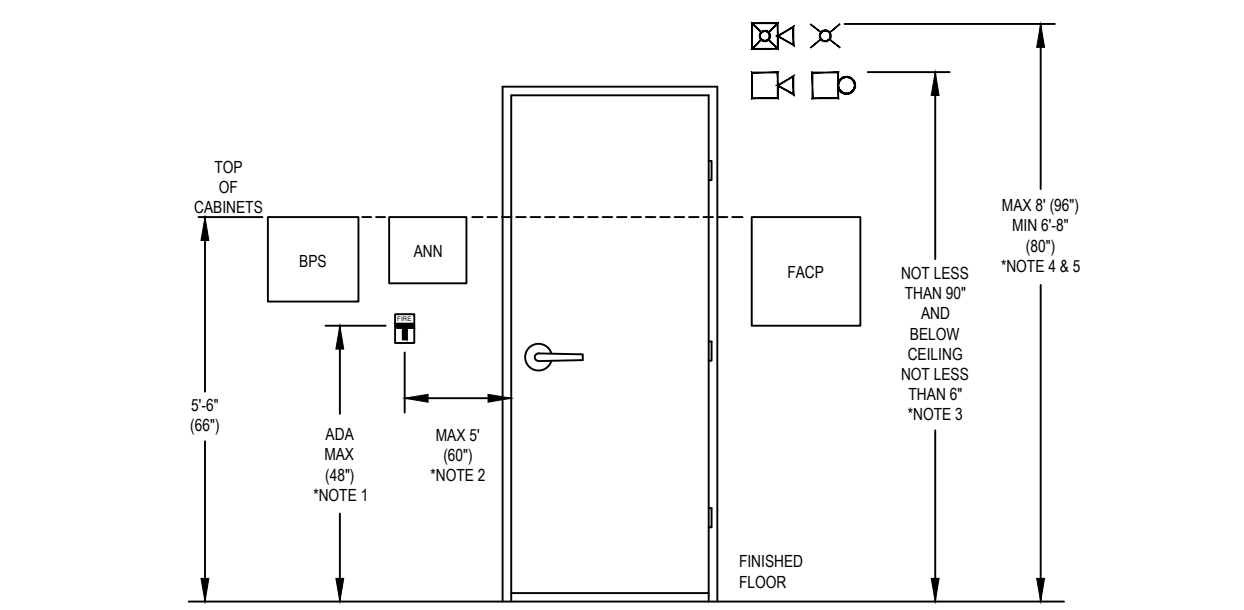
APPLICABLE CODES

INTERNATIONAL BUILDING CODE - 2018 ED.
 INTERNATIONAL MECHANICAL CODE - 2018 ED.
 UNIFORM PLUMBING CODE - 2018 ED.
 INTERNATIONAL FUEL GAS CODE - 2018 ED.
 INTERNATIONAL ENERGY CONSERVATION CODE - 2018 ED.
 NATIONAL ELECTRICAL CODE - 2017 ED.
 INTERNATIONAL FIRE CODE - 2018 ED.
 ADA STANDARDS FOR ACCESSIBLE DESIGN - 2010 ED.
 NFPA 72 2016 EDITION

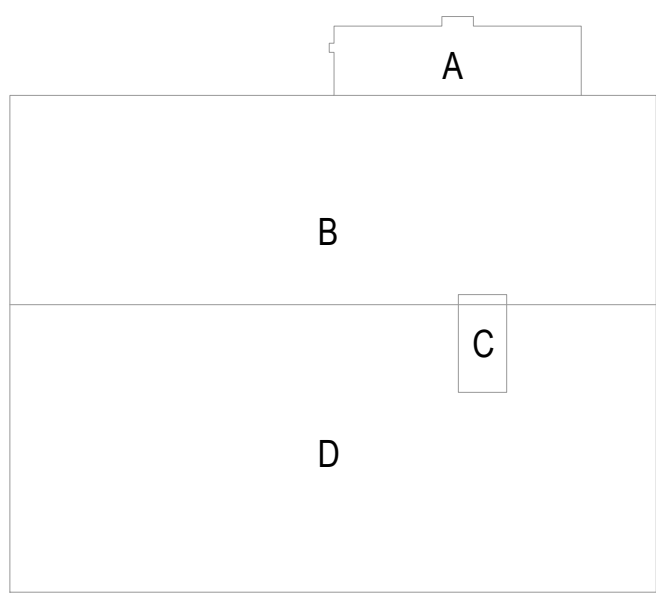
CONTRACTOR INFO

TYPICAL MOUNTING HEIGHTS

- NFPA 72 2016 17.4.4.5 THE OPERABLE PART OF EACH MANUAL FIRE ALARM BOX SHALL BE NOT LESS THAN 42" AND NOT MORE THAN 66" ABOVE FLOOR LEVEL.
- NFPA 72 2016 17.4.4.4 MANUAL FIRE ALARM BOXES SHALL BE LOCATED WITHIN 60" OF THE EXIT DOORWAY OPENING AT EACH EXIT ON EACH FLOOR.
- NFPA 72 2016 18.4.8.1 IF CEILING HEIGHTS ALLOW, AND UNLESS OTHERWISE PERMITTED BY 18.4.8.2 THROUGH 18.4.8.5, WALL MOUNTED APPLIANCES SHALL HAVE THEIR TOPS ABOVE THE FINISHED FLOORS AT HEIGHTS OF NOT LESS THAN 80" AND BELOW THE FINISHED CEILING AT DISTANCES OF NOT LESS THAN 6".
- NFPA 72 2016 18.4.8.3 IF COMBINATION AUDIBLE/ VISIBLE APPLIANCES ARE INSTALLED, THE LOCATION OF THE INSTALLED APPLIANCE SHALL BE DETERMINED BY THE REQUIREMENTS OF 18.5.4. (SEE NOTE 3).
- NFPA 72 2016 18.5.1 WALL MOUNTED APPLIANCES SHALL BE MOUNTED SUCH THAT THE ENTIRE LENS IS NOT LESS THAN 80" AND NOT GREATER THAN 86" ABOVE THE FINISHED FLOOR OR AT THE MOUNTING HEIGHT SPECIFIED USING THE PERFORMANCE BASED ALTERNATIVE OF 18.5.1.6.



SITE PLAN



EVENT

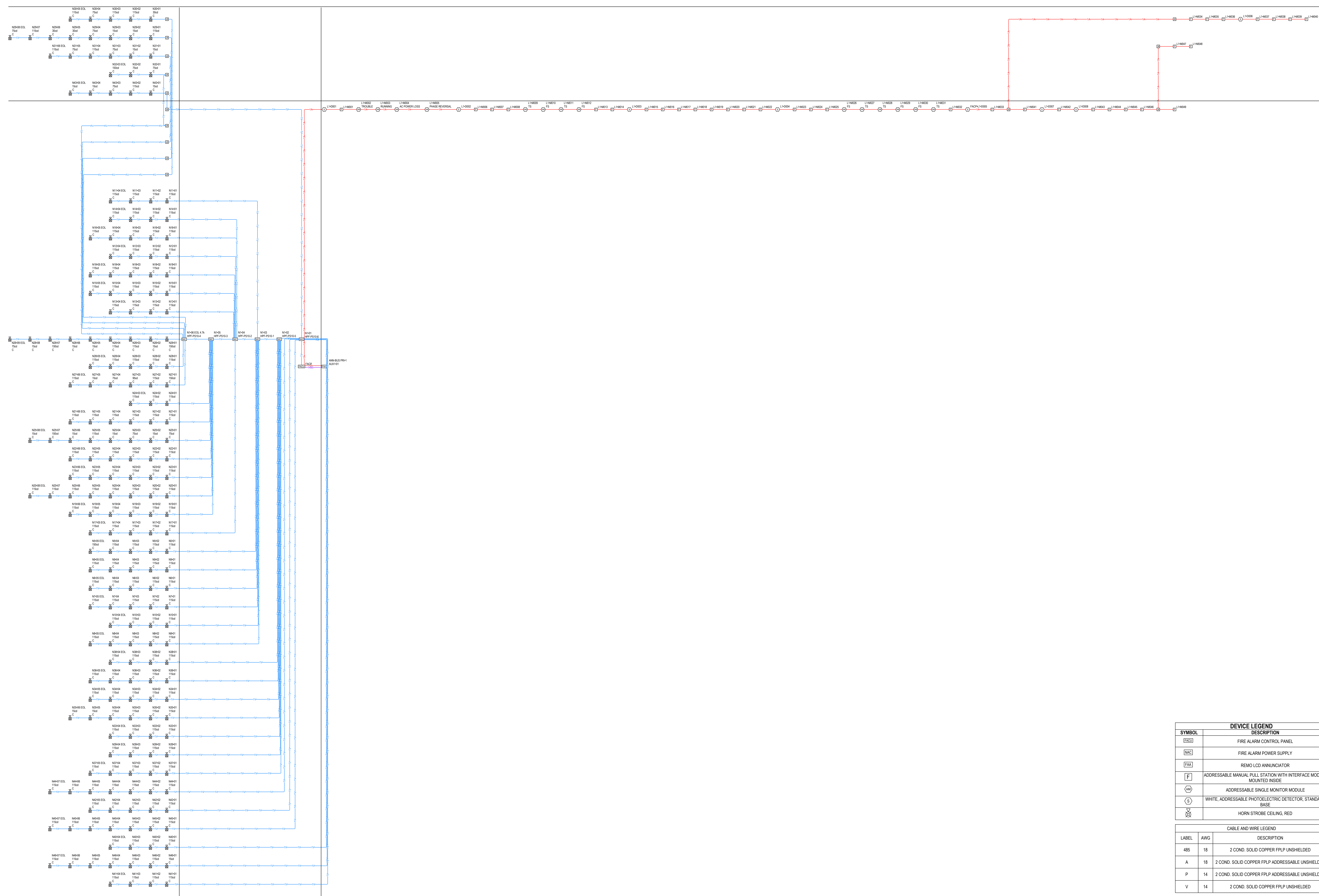
EVENT	TROUBLE SIGNAL @ FIRE ALARM CONTROL PANEL	SUPERVISORY SIGNAL @ FIRE ALARM CONTROL PANEL	ALARM SIGNAL @ FIRE ALARM CONTROL PANEL	ACTIVATE NOTIFICATION DEVICES
SMOKE DETECTOR			●	●
MANUAL PULL STATION			●	●
WATERFLOW SWITCH			●	●
1ST FLOOR ELEVATOR LOBBY SMOKE DETECTOR			●	●
2ND FLOOR - ELEVATOR LOBBY SMOKE DETECTOR			●	●
TAMPER SWITCH		●		
FIRE PUMP RUNNING		●		
FIRE PUMP PHASE REVERSAL		●		
FIRE PUMP AC FAILURE		●		
FIRE PUMP LOSS OF PHASE		●		
FACP AC POWER FAILURE	●			
SYSTEM LOW BATTERY	●			
OPEN CIRCUIT	●			
GROUND FAULT	●			
NOTIFICATION APPLIANCE CIRCUIT SHORT	●			
CELLULAR DISCONNECT	●			
ETHERNET DISCONNECT	●			

NOTE: ALL SIGNALS WILL BE SENT TO A CENTRAL STATION

ACTION

TROUBLE SIGNAL @ FIRE ALARM CONTROL PANEL
 SUPERVISORY SIGNAL @ FIRE ALARM CONTROL PANEL
 ALARM SIGNAL @ FIRE ALARM CONTROL PANEL
 ACTIVATE NOTIFICATION DEVICES

RISER DIAGRAM



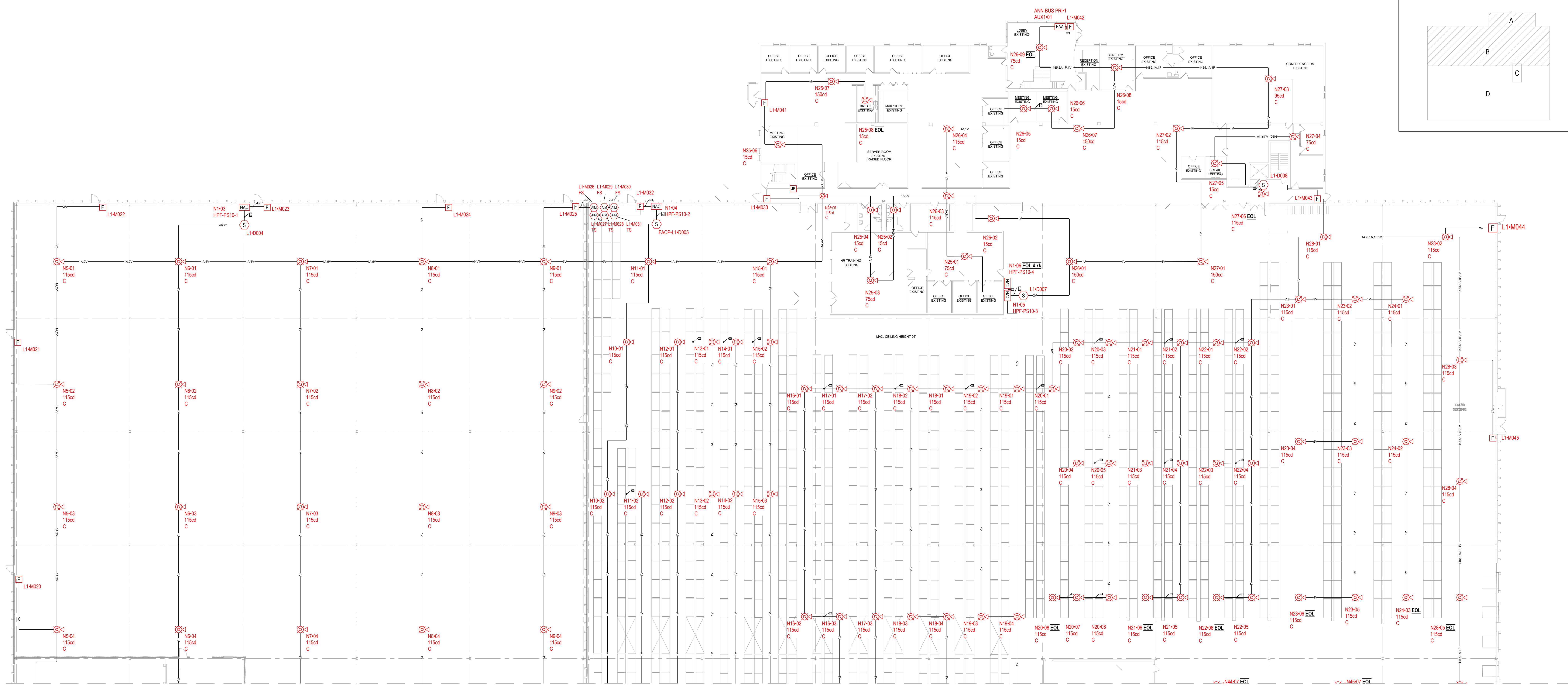
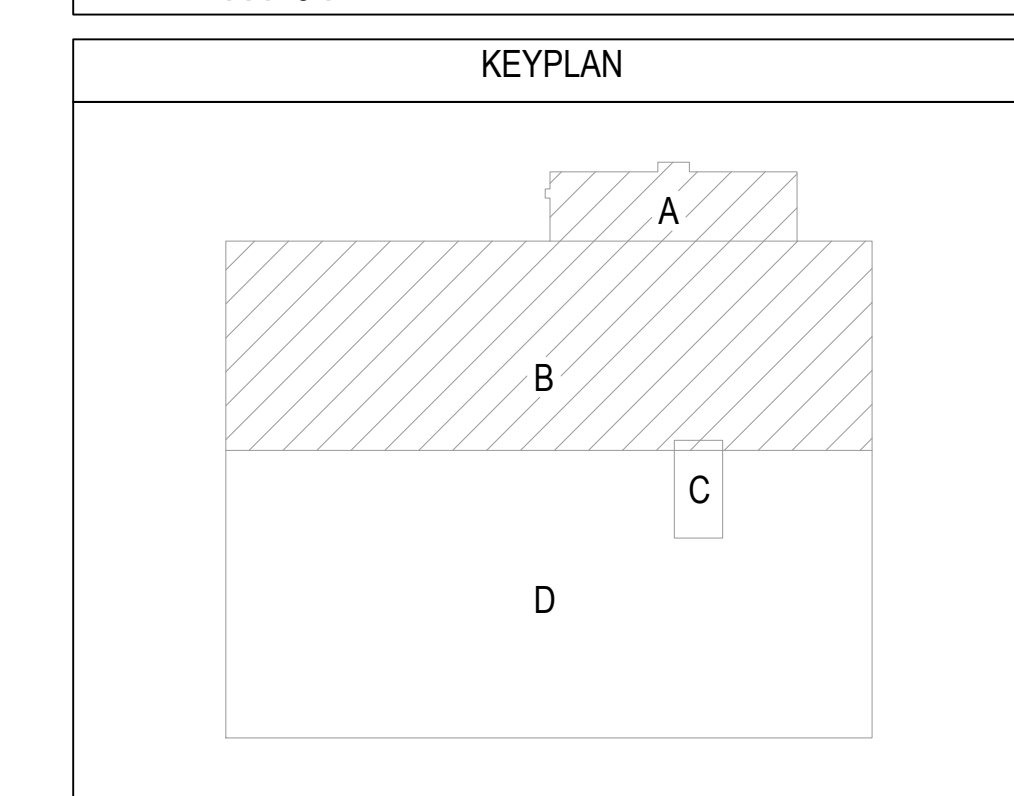
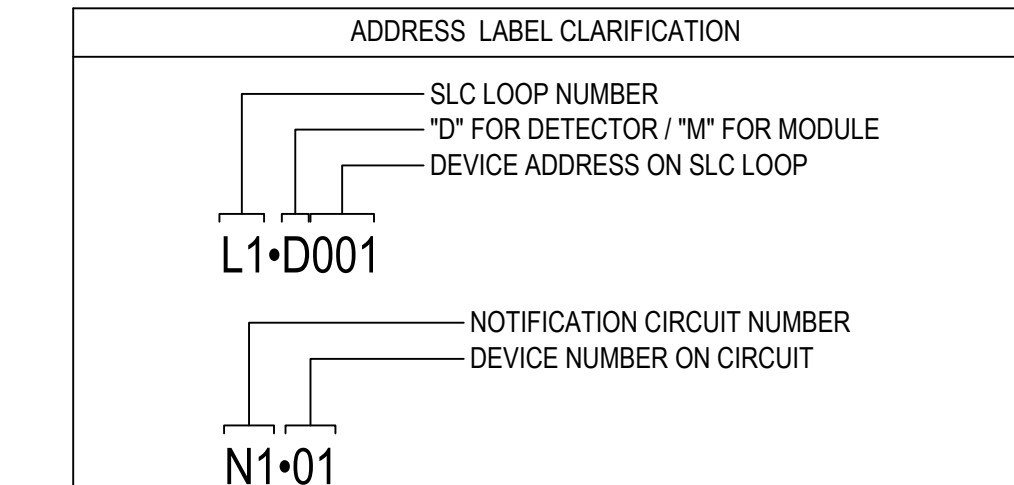
DEVICE LEGEND	
SYMBOL	DESCRIPTION
[FACP]	FIRE ALARM CONTROL PANEL
[FACP]	FIRE ALARM POWER SUPPLY
[FAX]	REMO LCD ANNUNCIATOR
[F]	ADDRESSABLE MANUAL PULL STATION WITH INTERFACE MODULE MOUNTED INSIDE
[M]	ADDRESSABLE SINGLE MONITOR MODULE
[S]	WHITE, ADDRESSABLE PHOTOELECTRIC DETECTOR, STANDARD BASE
[S]	HORN STROBE CEILING, RED

CABLE AND WIRE LEGEND		
LABEL	AWG	DESCRIPTION
485	18	2 COND. SOLID COPPER FPLP UNSHIELDED
A	18	2 COND. SOLID COPPER FPLP ADDRESSABLE UNSHIELDED
P	14	2 COND. SOLID COPPER FPLP ADDRESSABLE UNSHIELDED
V	14	2 COND. SOLID COPPER FPLP UNSHIELDED

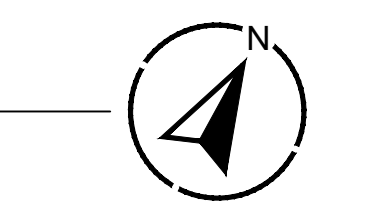
ADDRESS LABEL CLARIFICATION	
L1-D001	S/LC LOOP NUMBER 'D' FOR DETECTOR / 'M' FOR MODULE DEVICE ADDRESS ON S/LC LOOP
N1-01	NOTIFICATION CIRCUIT NUMBER DEVICE NUMBER ON CIRCUIT

DEVICE LEGEND	
SYMBOL	DESCRIPTION
[FACP]	FIRE ALARM CONTROL PANEL
[FAPSP]	FIRE ALARM POWER SUPPLY
[FAA]	REMO LCD ANNUNCIATOR
[F]	ADDRESSABLE MANUAL PULL STATION WITH INTERFACE MODULE MOUNTED INSIDE
[SM]	ADDRESSABLE SINGLE MONITOR MODULE
[S]	WHITE, ADDRESSABLE PHOTOELECTRIC DETECTOR, STANDARD BASE
[H]	HORN STROBE CEILING, RED

CABLE AND WIRE LEGEND		
LABEL	AWG	DESCRIPTION
485	18	2 COND. SOLID COPPER FPLP UNSHIELDED
A	18	2 COND. SOLID COPPER FPLP ADDRESSABLE UNSHIELDED
P	14	2 COND. SOLID COPPER FPLP ADDRESSABLE UNSHIELDED
V	14	2 COND. SOLID COPPER FPLP UNSHIELDED



CONTINUE ON PAGE FA-03



KEYPLAN

DEVICE LEGEND

SYMBOL	DESCRIPTION
[FACP]	FIRE ALARM CONTROL PANEL
[FAP]	FIRE ALARM POWER SUPPLY
[FAS]	REMO LCD ANNUNCIATOR
[F]	ADDRESSABLE MANUAL PULL STATION WITH INTERFACE MODULE MOUNTED INSIDE
[AM]	ADDRESSABLE SINGLE MONITOR MODULE
[S]	WHITE, ADDRESSABLE PHOTOELECTRIC DETECTOR, STANDARD BASE
[H]	HORN STROBE CEILING, RED

CABLE AND WIRE LEGEND

LABEL	AWG	DESCRIPTION
485	18	2 COND. SOLID COPPER FPLP UNSHIELDED
A	18	2 COND. SOLID COPPER FPLP ADDRESSABLE UNSHIELDED
P	14	2 COND. SOLID COPPER FPLP ADDRESSABLE UNSHIELDED
V	14	2 COND. SOLID COPPER FPLP UNSHIELDED

ADDRESS LABEL CLARIFICATION

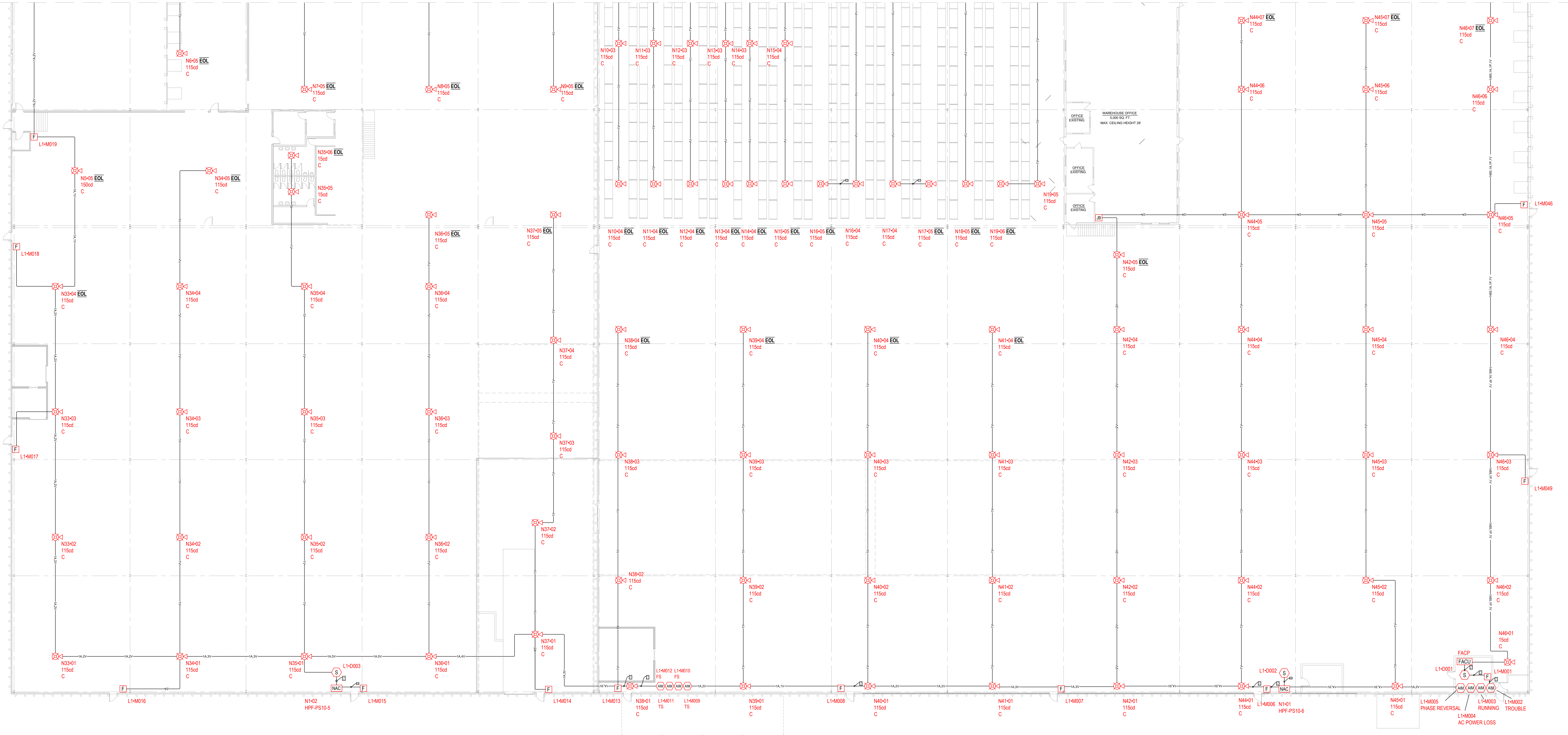
SLC LOOP NUMBER
 * FOR DETECTOR, *P FOR MODULE
 DEVICE ADDRESS ON SLC LOOP

NOTIFICATION CIRCUIT NUMBER
 DEVICE NUMBER ON CIRCUIT

L1-D001

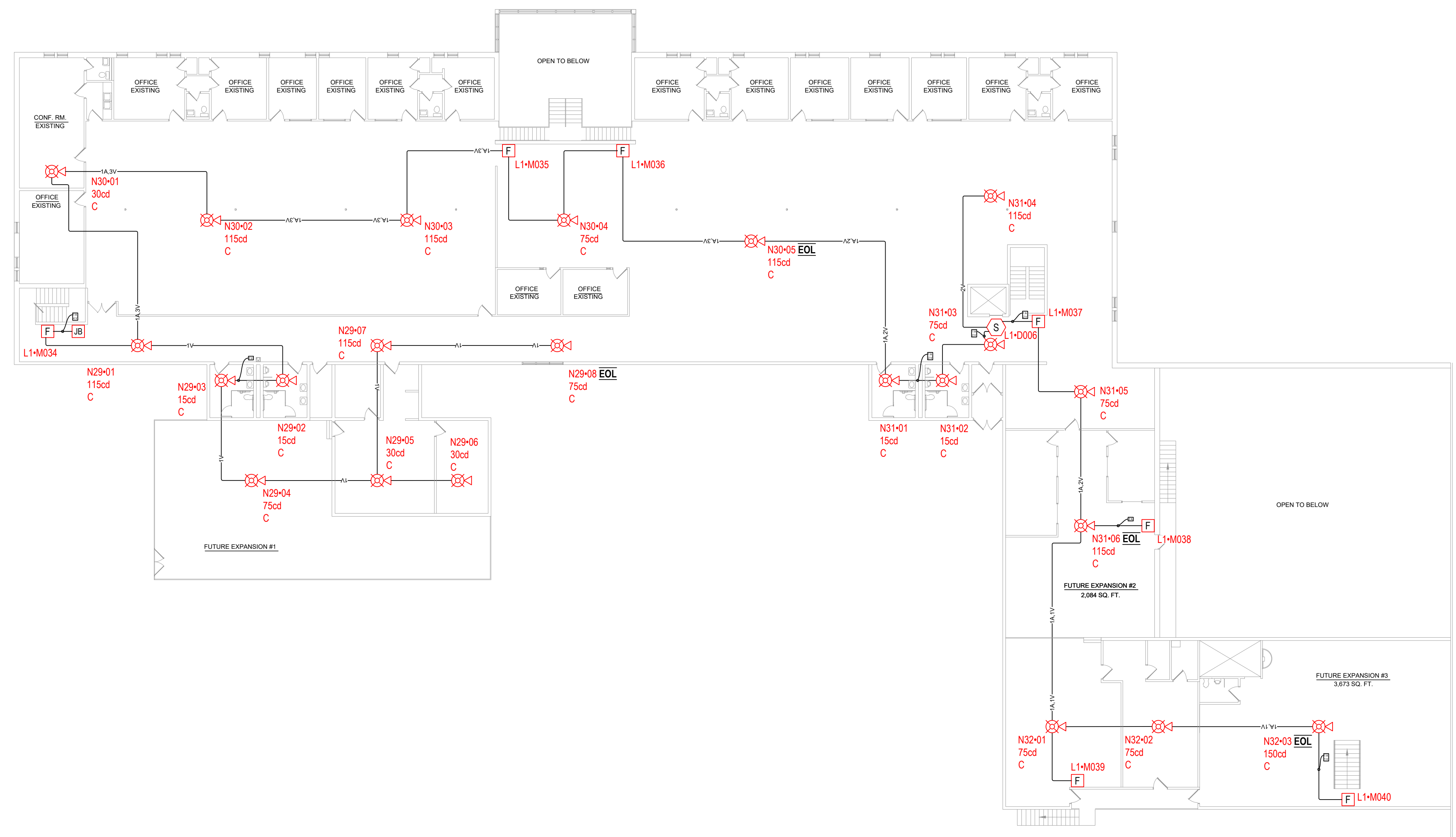
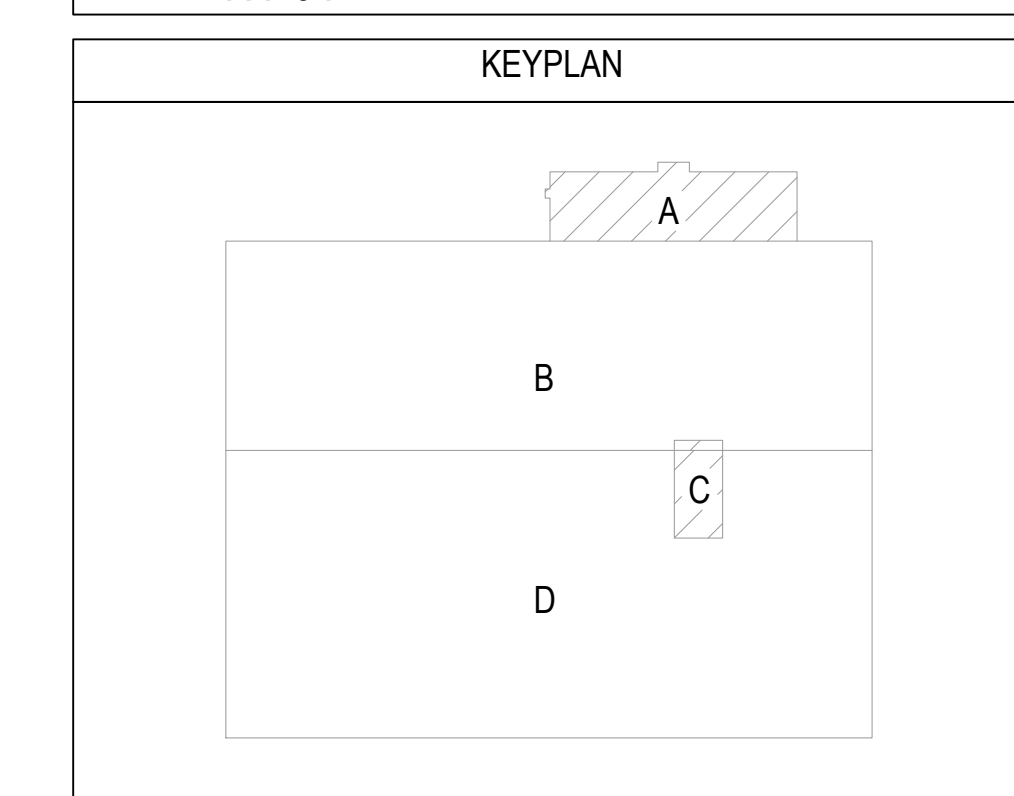
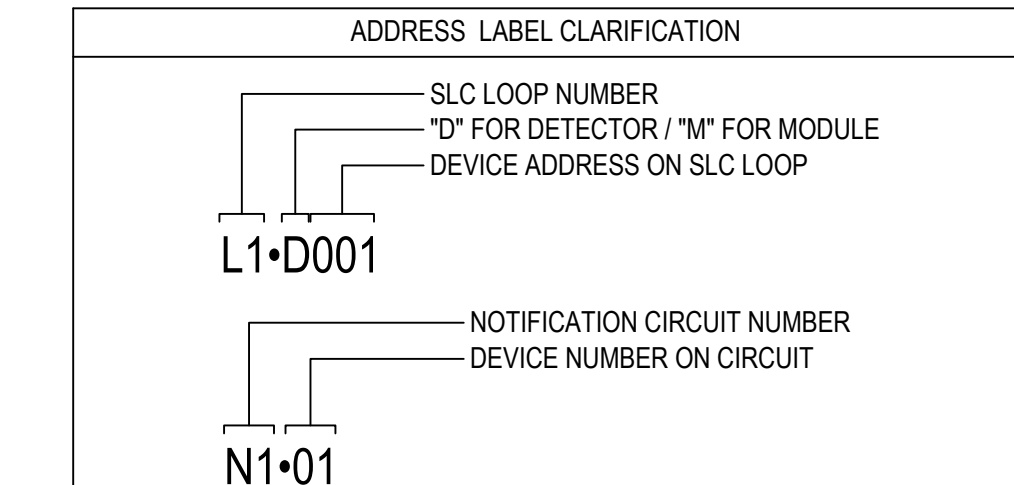
N1-01

CONTINUE ON PAGE FA-02

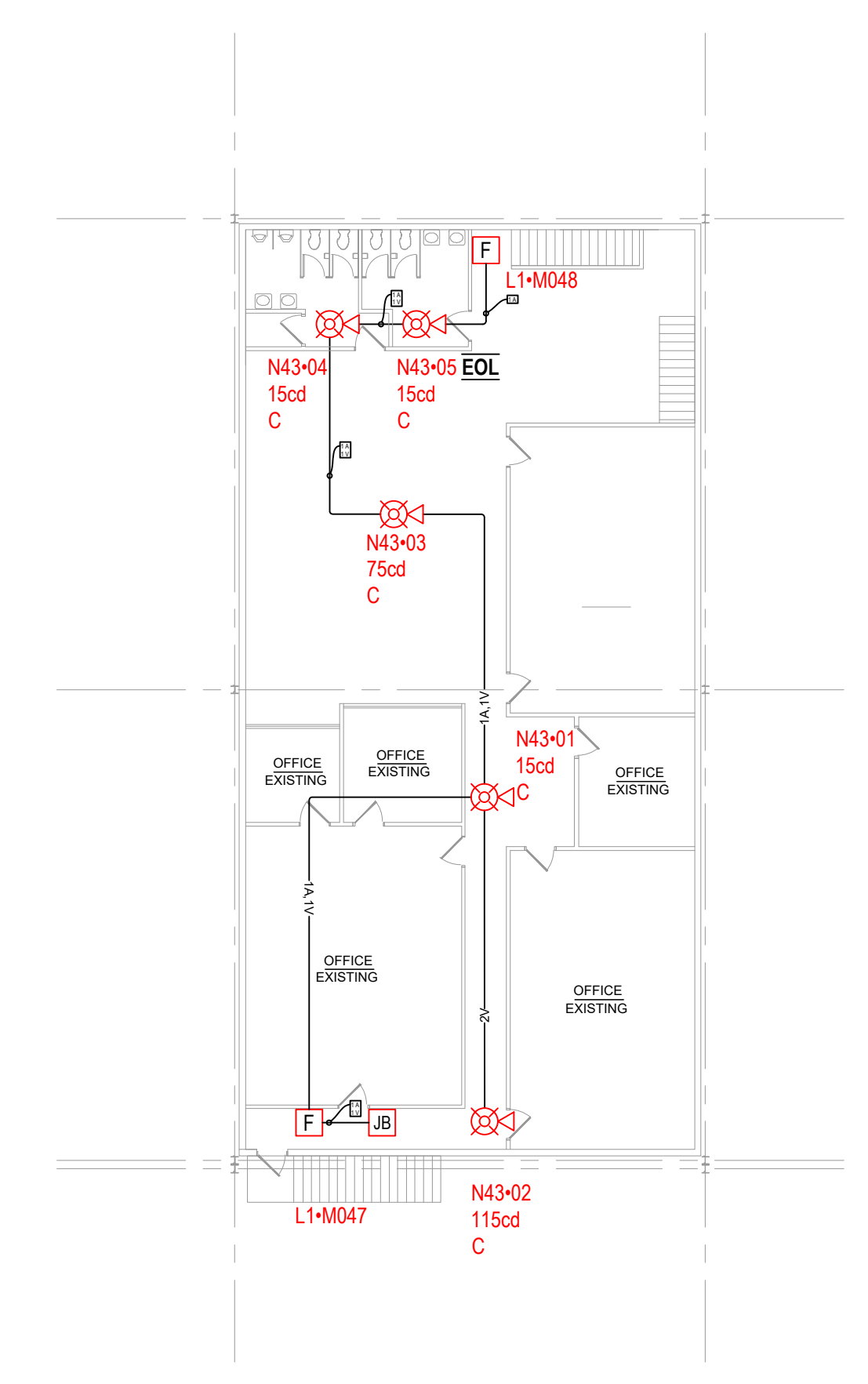


DEVICE LEGEND	
SYMBOL	DESCRIPTION
[FACP]	FIRE ALARM CONTROL PANEL
[FAPSP]	FIRE ALARM POWER SUPPLY
[FAS]	REMO LCD ANNUNCIATOR
[F]	ADDRESSABLE MANUAL PULL STATION WITH INTERFACE MODULE MOUNTED INSIDE
[AMM]	ADDRESSABLE SINGLE MONITOR MODULE
[S]	WHITE, ADDRESSABLE PHOTOELECTRIC DETECTOR, STANDARD BASE
[HSC]	HORN STROBE CEILING, RED

CABLE AND WIRE LEGEND		
LABEL	AWG	DESCRIPTION
485	18	2 COND. SOLID COPPER FPLP UNSHIELDED
A	18	2 COND. SOLID COPPER FPLP ADDRESSABLE UNSHIELDED
P	14	2 COND. SOLID COPPER FPLP ADDRESSABLE UNSHIELDED
V	14	2 COND. SOLID COPPER FPLP UNSHIELDED



1 SECOND FLOOR PLAN



1 SECOND FLOOR PLAN

